

KEY MAP - NTS

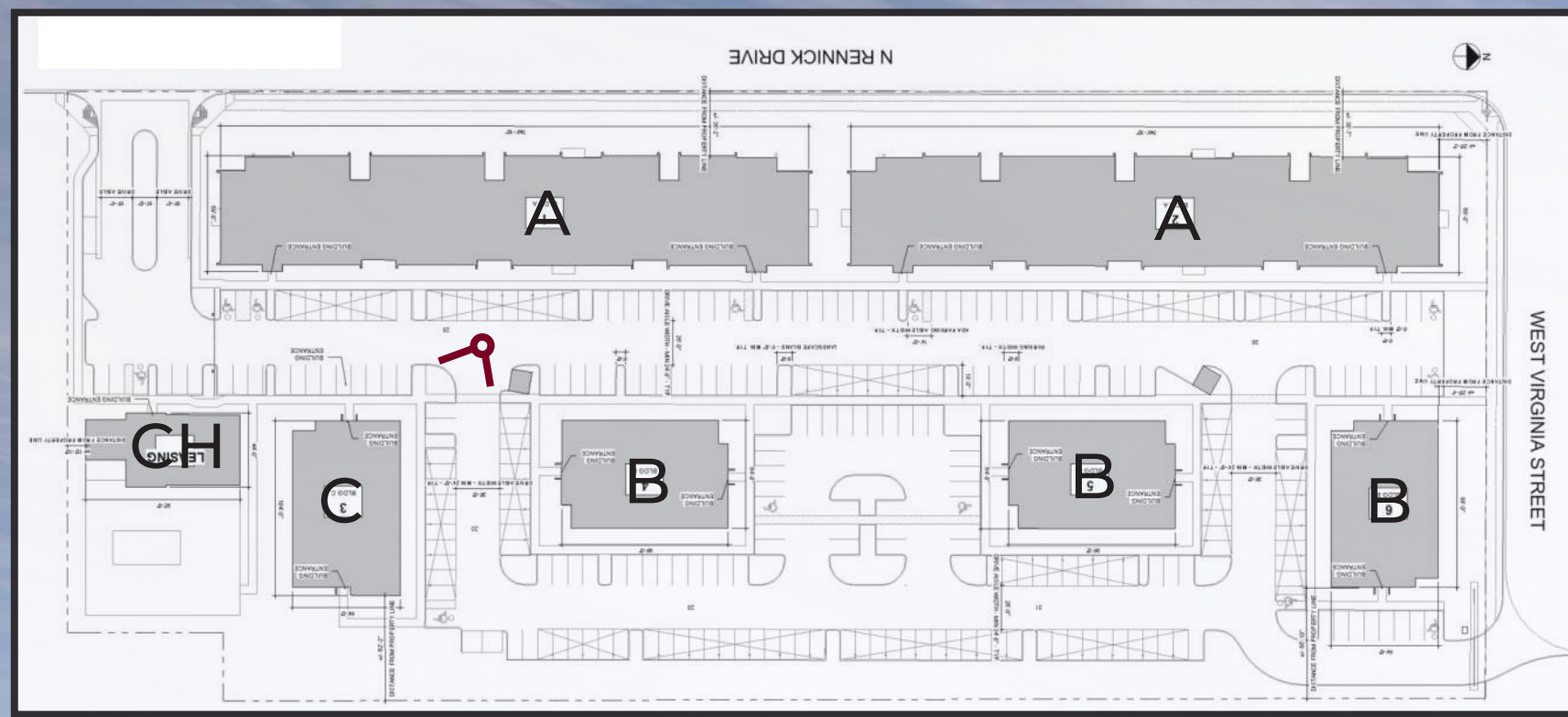


BANYAN - APACHE JUNCTION APARTMENTS

APACHE JUNCTION, ARIZONA
CLUBHOUSE BUILDING ARCHITECTURAL RENDERING | KA#225084 | DATE 06/11/2026



LP
02

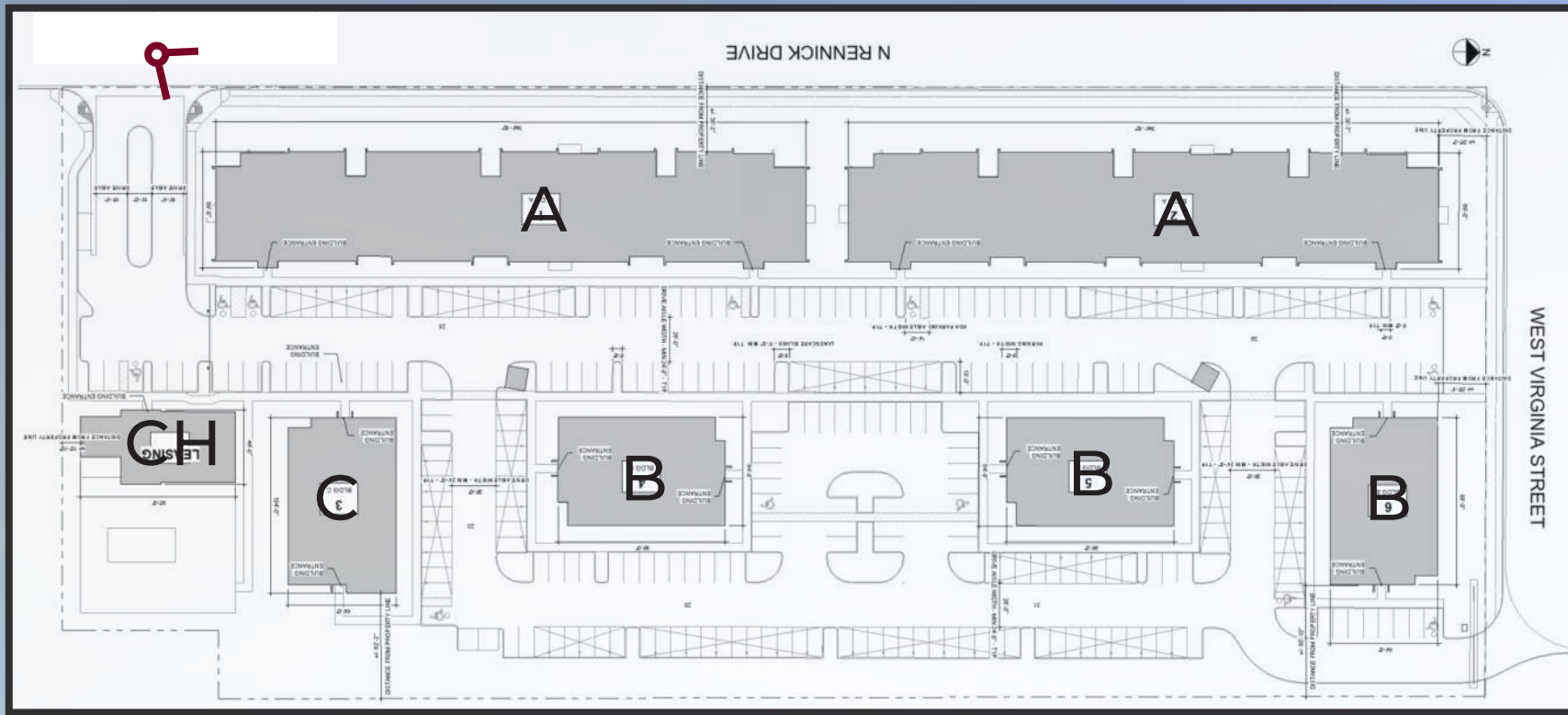


KEY MAP - NTS



BANYAN - APACHE JUNCTION APARTMENTS

APACHE JUNCTION, ARIZONA
BUILDING B & C ARCHITECTURAL RENDERING | KA#225084 | DATE 06/11/2026



KEY MAP - NTS



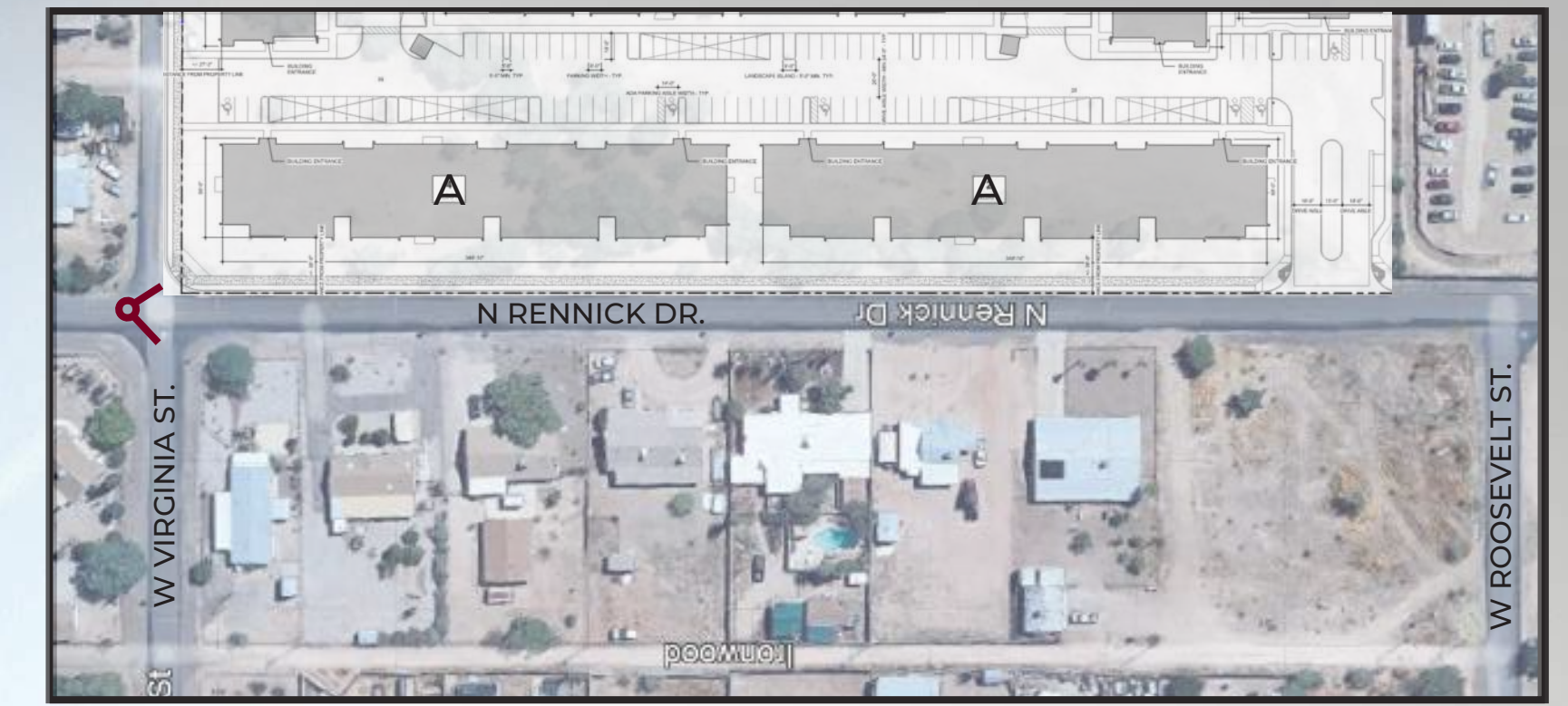
BANYAN - APACHE JUNCTION APARTMENTS

APACHE JUNCTION, ARIZONA

BUILDING A ARCHITECTURAL RENDERING | KA#225084 | DATE 06/11/2026



LP
04






KEY MAP - NTS

BANYAN - APACHE JUNCTION APARTMENTS

APACHE JUNCTION, ARIZONA
STREET SCENE LOOKING SOUTH | KA#225084 | DATE 06/11/2026



MATERIAL LEGEND	
	STUCCO - SW6086 SAND DUNE OR EQUAL
	STUCCO - SW2854 CARIBBEAN CORAL OR EQUAL
	STUCCO - SW2831 CLASSICAL GOLD OR EQUAL
	STUCCO - SW2812 ROOKWOOD JADE OR EQUAL
	CMU

STREET FACING BUILDING MATERIALS

TOTAL FACADE AREA : 10,124 SF
 OPENINGS : 2,043 SF 21%
 STUCCO : 8,081 SF 79%
 CMU BLOCK - STACKED : 0 SF

INTERNAL FACING BUILDING MATERIALS

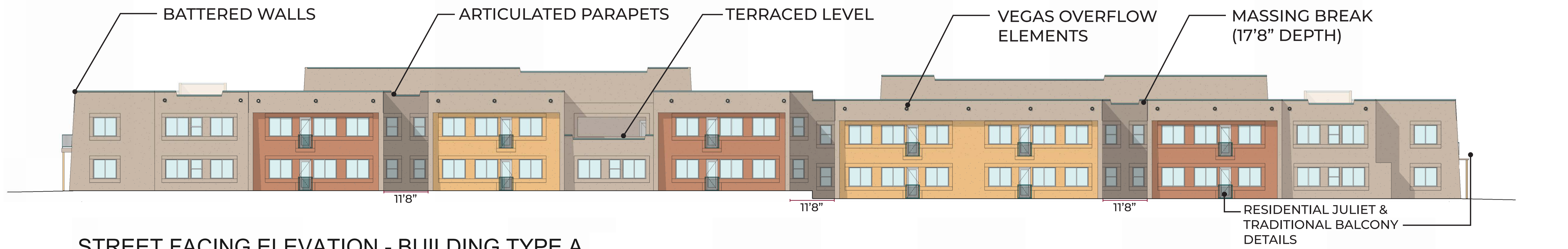
TOTAL FACADE AREA : 9,785 SF
 OPENINGS : 1,938 SF 20%
 STUCCO : 7,847 SF 80%
 CMU BLOCK - STACKED : 0 SF



RENNICK STREET FACING SOUTH

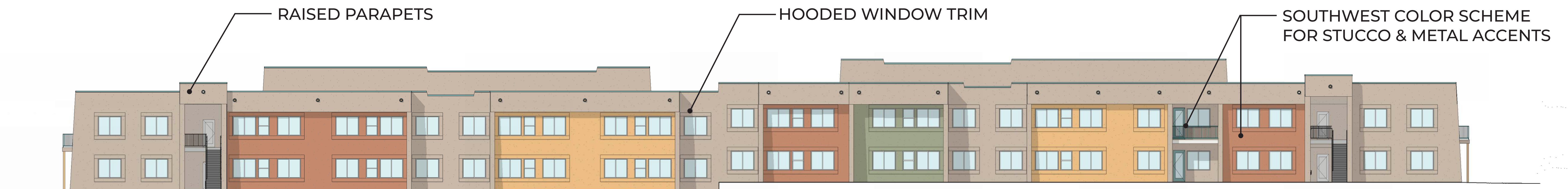


RENNICK STREET FACING NORTH



STREET FACING ELEVATION - BUILDING TYPE A

1/16" = 1'-0"



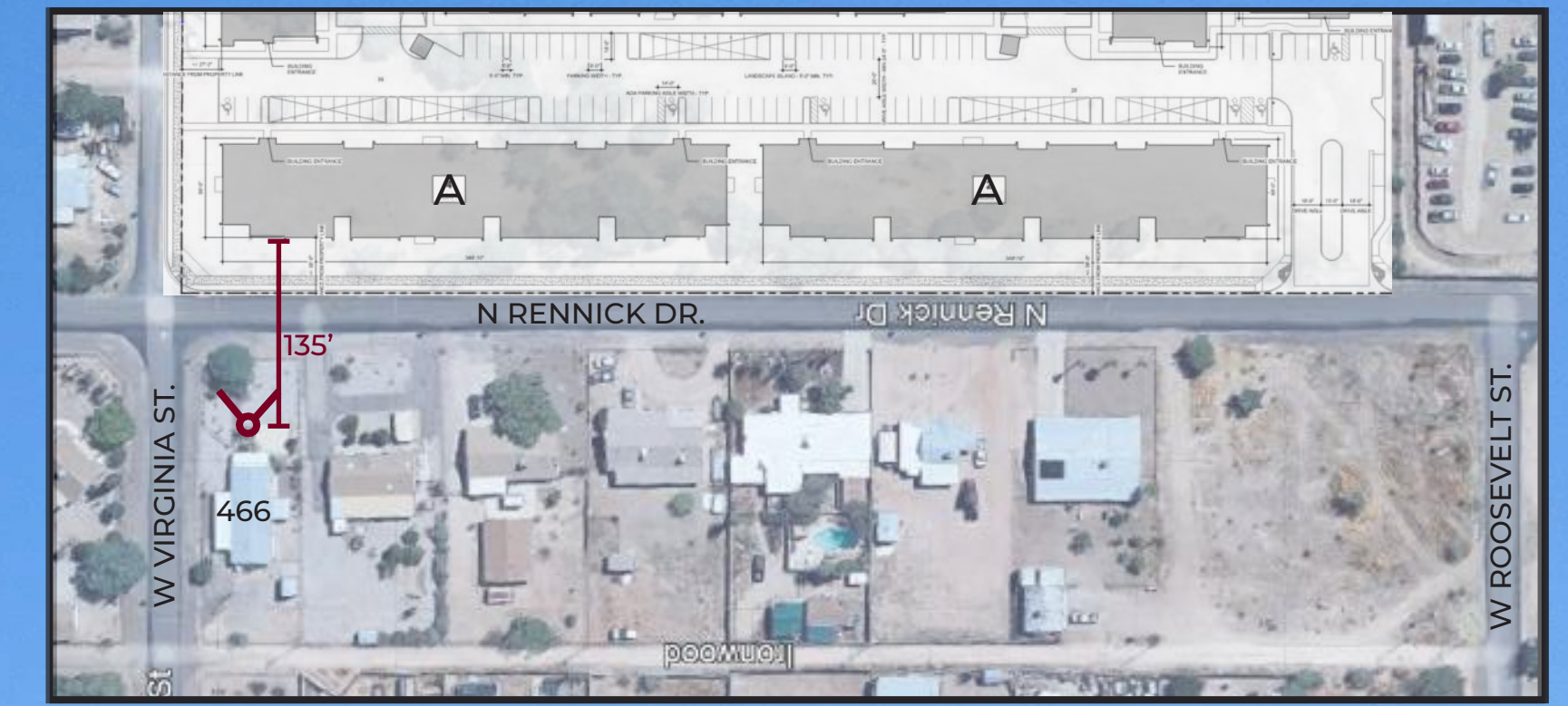
INTERNAL ELEVATION - BUILDING TYPE A - SD

1/16" = 1'-0"

BANYAN - APACHE JUNCTION APARTMENTS

APACHE JUNCTION, ARIZONA
 ARCHITECTURE CHARACTER STUDY - BUILDING A | KA#225084 | DATE 06/11/2026





KEY MAP - NTS



BANYAN - APACHE JUNCTION APARTMENTS

APACHE JUNCTION, ARIZONA
STREET SCENE LOOKING EAST | KA#225084 | DATE 06/11/2026





KEY MAP - NTS



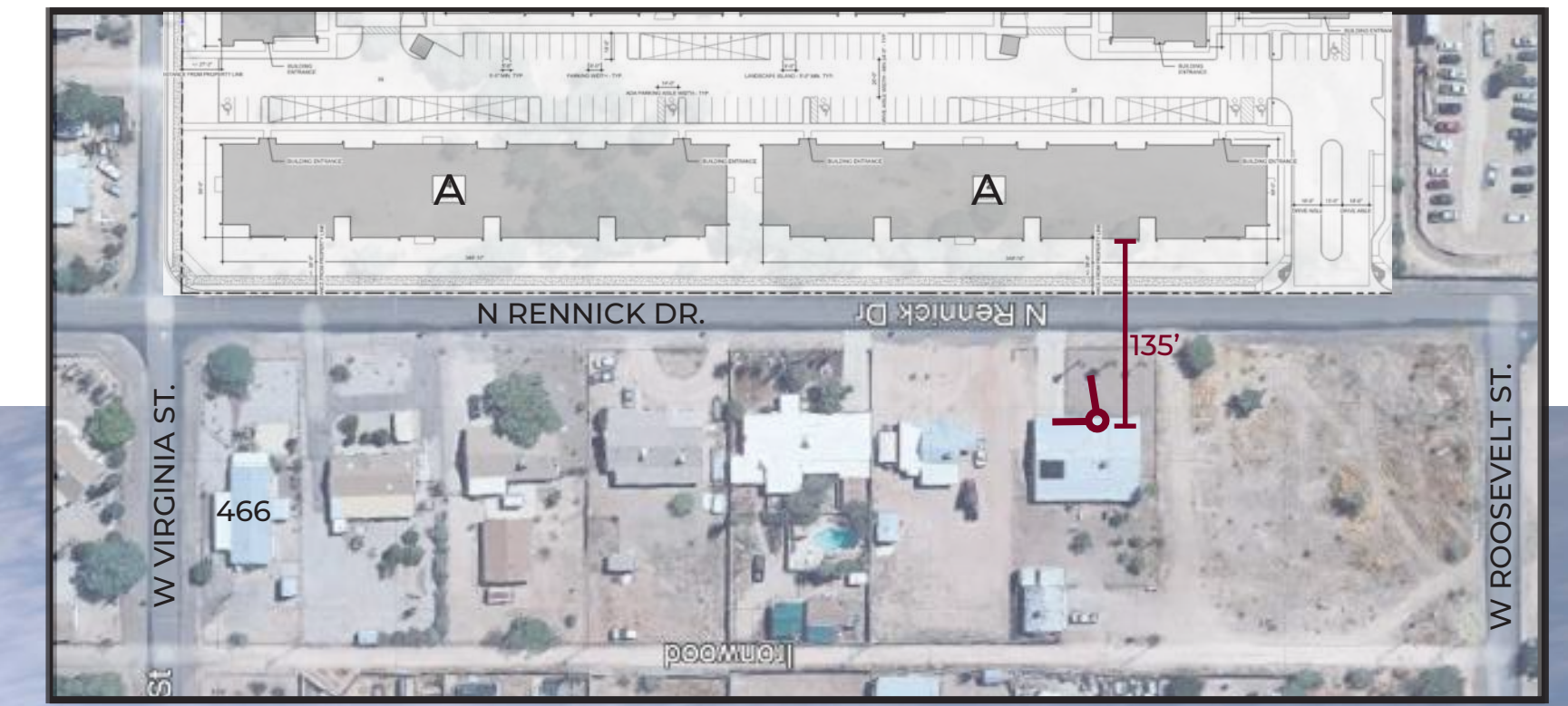
BANYAN - APACHE JUNCTION APARTMENTS

APACHE JUNCTION, ARIZONA

STREET SCENE LOOKING EAST | KA#225084 | DATE 06/11/2026



LP
08



KEY MAP - NTS



BANYAN - APACHE JUNCTION APARTMENTS

APACHE JUNCTION, ARIZONA

STREET SCENE LOOKING NORTHEAST | KA#225084 | DATE 06/11/2026

