

North-South Corridor Study (NSCS) US 60 to Arizona Farms Road (Segment 1)

Tier 2 Environmental Study and Design Concept Report (DCR)

Apache Junction City Council Meeting | May 5, 2025

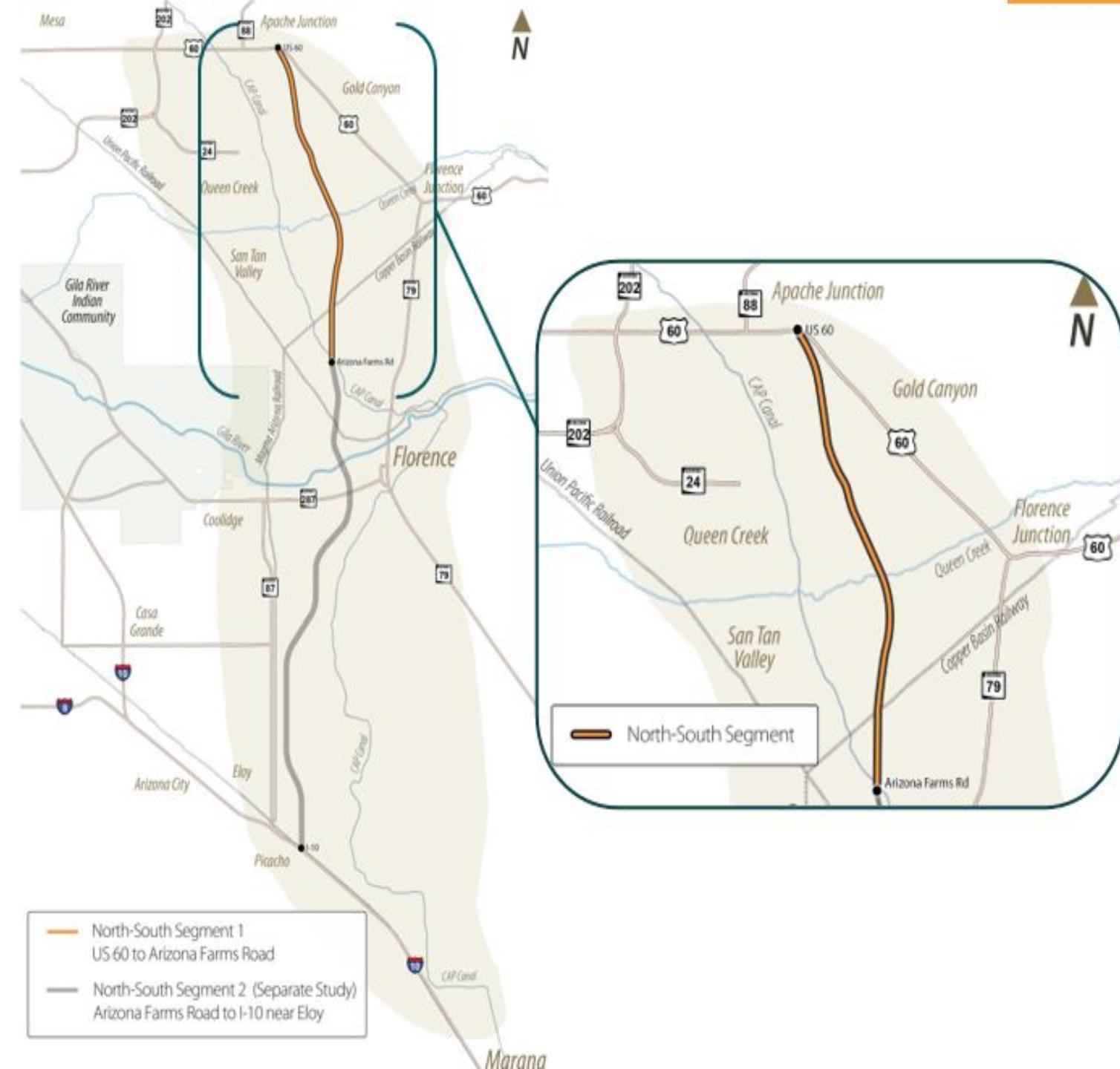


North-South Corridor Background

- Corridor spans more than 50 miles between US 60 and I-10
- In Aug. 2021 ADOT selected a 1,500-foot wide North-South corridor through a Tier 1 Environmental Impact Statement (EIS)/DCR process
- The North-South Corridor Study split into two separate Tier 2 studies

Tier 2 Study

- Segment 1:
US 60 to Arizona
Farms Road
- 20 miles
- SR 24 not a
component of this
study. Will be further
evaluated as a part
of a future study.



Study Goals



Identify alternatives for narrowing the corridor segment, from a 1,500-foot corridor to a proposed 400-foot freeway alignment.



Identify proposed interchange locations and develop interchange design concepts.



Develop a Tier 2 EIS and DCR.



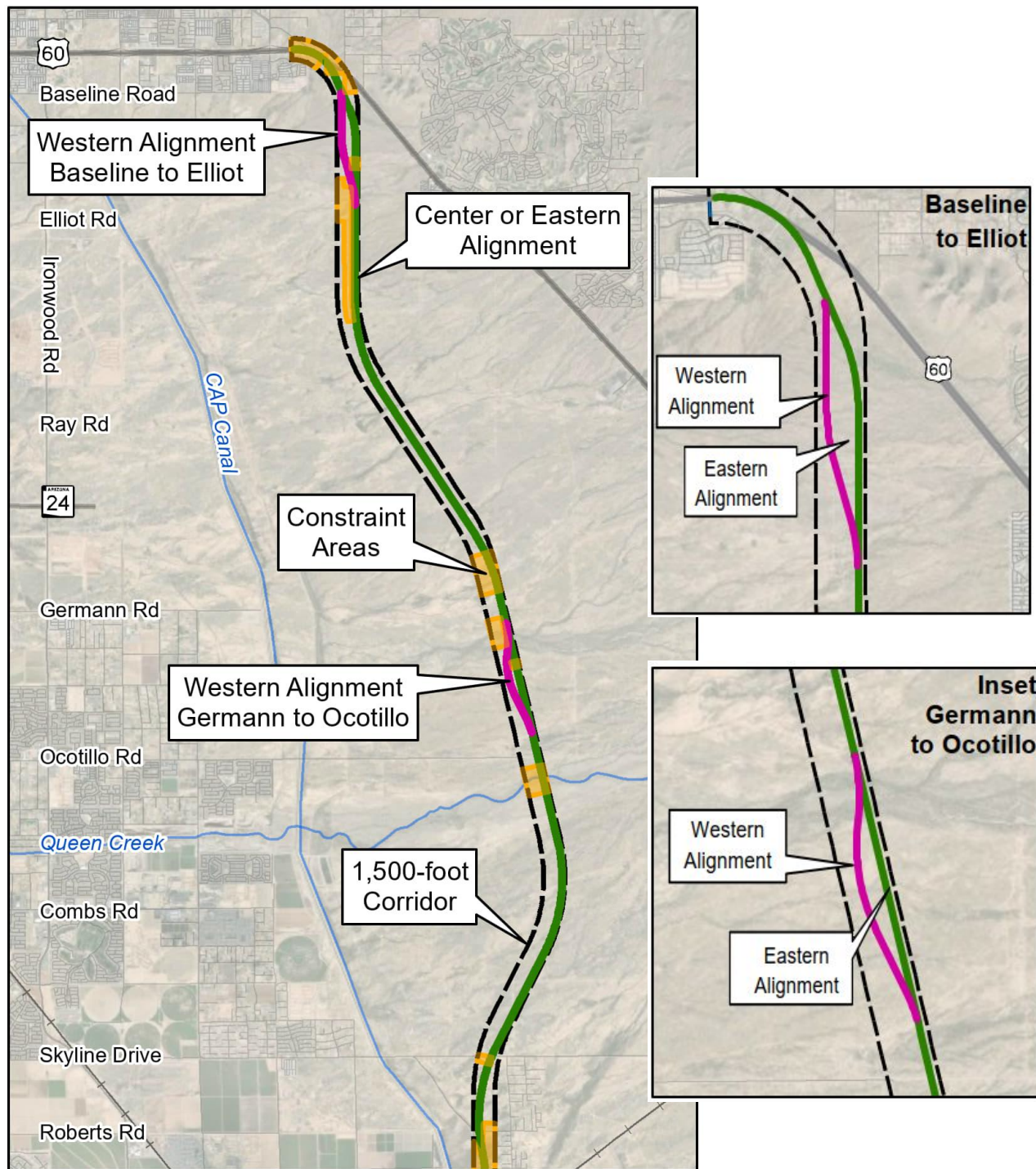
Determine the Selected Alternative.

Preliminary Purpose and Need

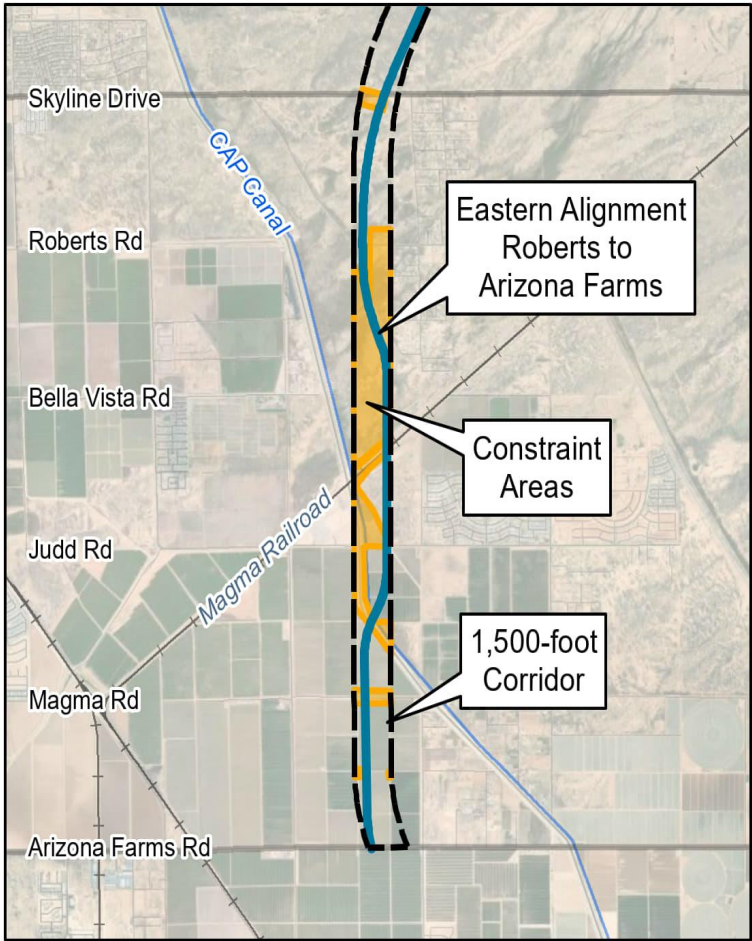
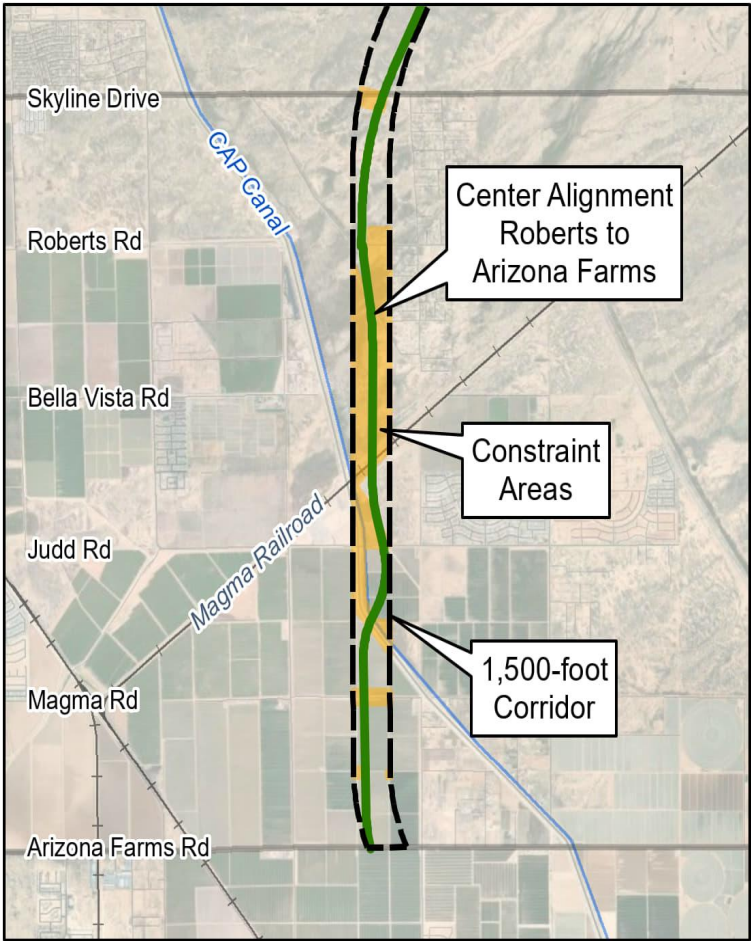
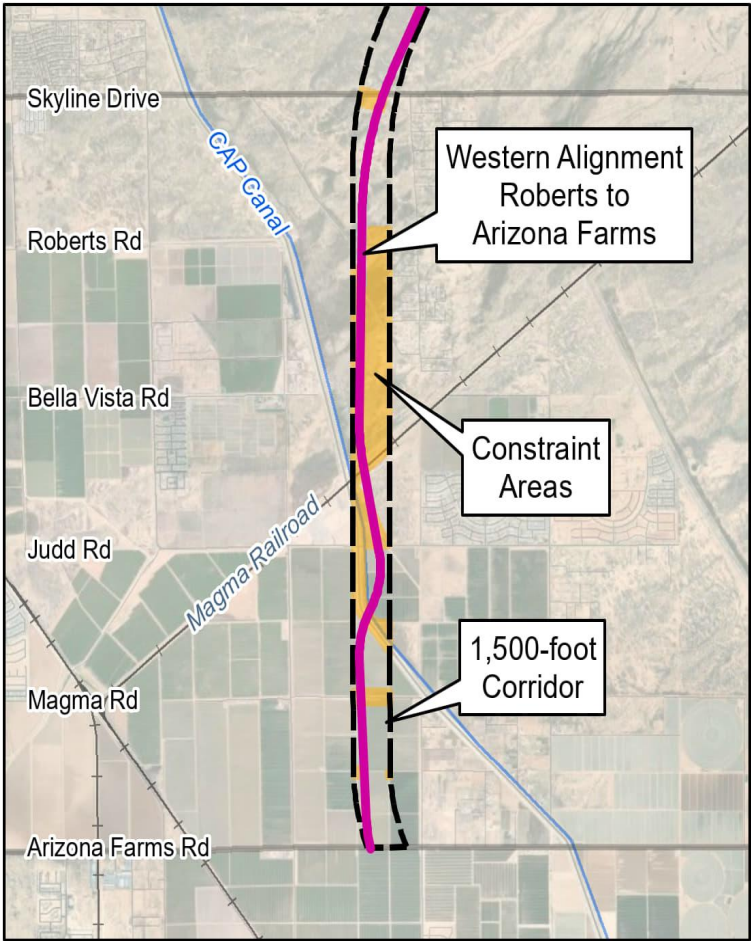
- Improve access to future activity centers
- Improve regional mobility
- Improve north-to-south connectivity
- Integrate the region's transportation network
- Address existing and future population and employment growth

Preliminary Alignments: US 60 to Roberts Road

- Identified preliminary build alternatives with two alignment alternatives in two areas:
 - Baseline Road to Elliot Road
 - Germann Road to Ocotillo Road
 - South of Skyline Drive

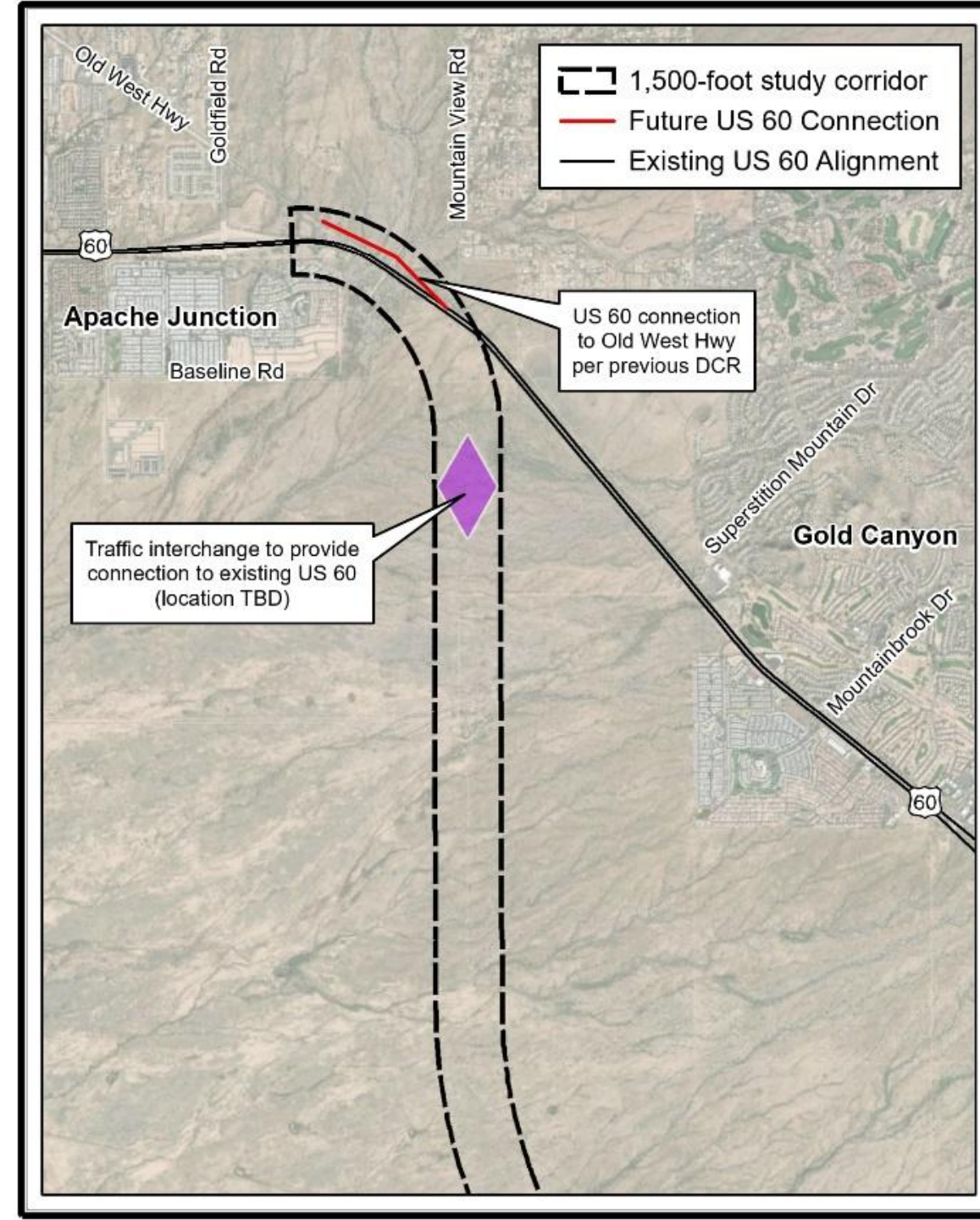


Preliminary Alignments: Roberts Road to Arizona Farms Road



Connection to US 60

- Direct connection between US 60 and SR 505
- Possible connection concepts:
 - a. Existing US 60 east of Mountain View Rd to remain (with access points and traffic signals)
 - b. New traffic interchange and roadway connection at Houston Ave to connect to US 60
 - c. Connect Old West Highway to the existing US 60 at Goldfield Road
 - d. US 60/Goldfield Road interchange to remain

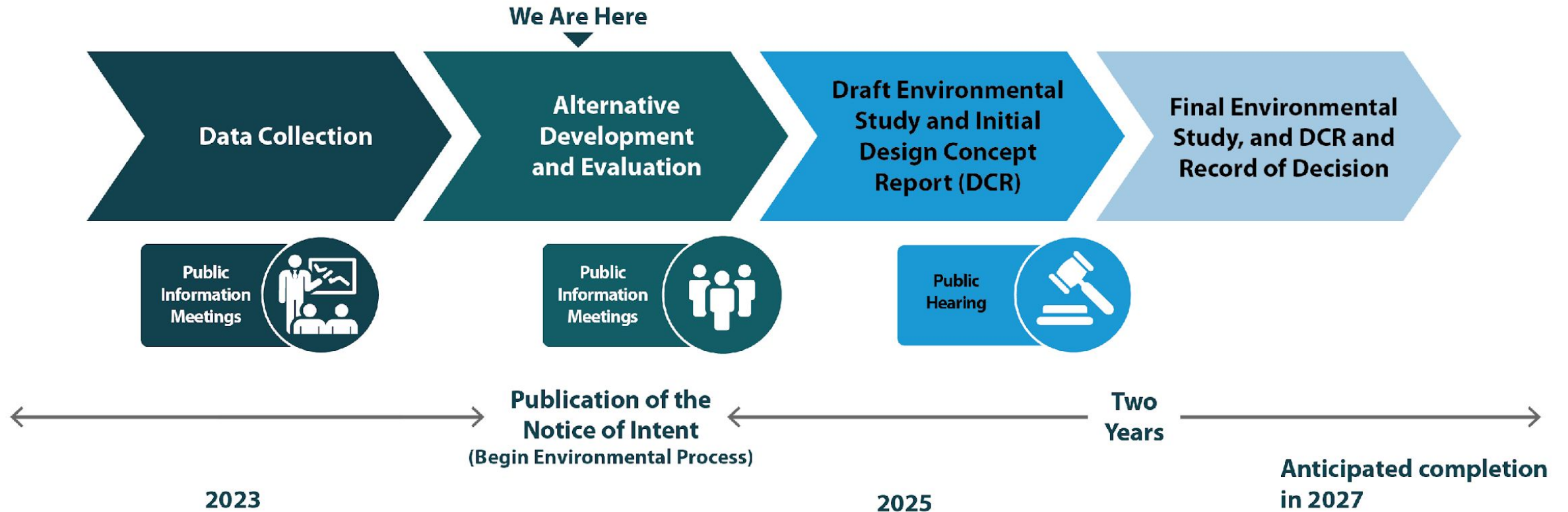


Traffic Interchanges

- Potential locations
 - o Houston Ave
 - o Elliott Rd
 - o Ray Rd
 - o SR 24
 - o Germann Rd
 - o Ocotillo Rd
 - o Combs Rd/Riggs Rd
 - o Skyline Dr
 - o Bella Vista Rd
 - o Judd Rd
 - o AZ Farms Rd



Study Schedule



*Schedule subject to change

Upcoming Public Meetings

Thursday, May 15 | 5:30 – 7:30 p.m.

- Apache Junction Multi-Generational Center (MGC)
- 1035 N Idaho Rd., Apache Junction

Tuesday, May 20 | 5:30 – 7:30 p.m.

- Poston Butte High School
- 32375 N Gantzel Rd., San Tan Valley

Thursday, May 22 | 6 – 7 p.m.

- Virtual Public Meeting

Public Comment Period

Public can provide comments on current study phase through June 10, 2025



Public meetings (in-person or virtual)



Online comments:

www.northsouth-segment1.com



Email: info@northsouth-segment1.com



Call: 602-474-3990



Mail: ADOT NSCS Segment 1 c/o HDR, Inc.
20 E. Thomas Rd., Suite 2500
Phoenix, AZ 85012

Questions?