

FIRST AMENDMENT TO COMMUNITY MAINTENANCE AGREEMENT

THIS FIRST AMENDMENT is made and entered into this ___ day of May 2026, (“the Execution Date”) by and between CITY OF APACHE JUNCTION, ARIZONA, an Arizona municipal corporation (“City”), BROOKFIELD ASLD 8500 LLC, a Delaware limited liability company (“Developer”) and BLOSSOM ROCK COMMUNITY ALLIANCE, INC., an Arizona nonprofit corporation (the “Community Alliance”), all three collectively to be referred to as the “Parties” or individually as a “Party”.

RECITALS

A. The Parties entered into an agreement for community maintenance (the “Agreement”) on January 17th, 2023

B. Since that time, additional phases of Ironwood Road, Ray Road, Warner Avenue, and Elliott Road, Idaho Road, and other minor public roadways have been constructed and the Parties wish to include in the Agreement.

C. Because the coverage of the Agreement is being expanded, the Parties desire to modify Exhibits B and C as set forth in this First Amendment.

AGREEMENT

NOW, THEREFORE, in consideration of mutual promises contained herein and other good and valuable consideration, the receipt and adequacy of which is hereby acknowledged, the Parties agree to amend the Agreement as follows:


Exhibit B. PROPERTIES INCLUDED WITHIN MAINTENANCE AGREEMENT:
The newly executed Exhibit B will list all properties included in the Agreement as of June 1, 2026, including the newly constructed phases.

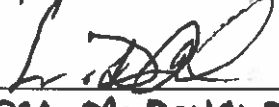
Exhibit C. **The newly executed Exhibit C will depict a map of all public and private park spaces within the scope of this agreement as of June 1, 2026.**

Except as expressly amended herein, all other terms and provisions of the Agreement shall remain in full force and effect until the Agreement is terminated.

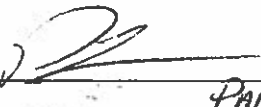
IN WITNESS WHEREOF, the Parties have caused this First Amendment to be signed by their duly authorized representatives as of the day and year first above written.

BROOKFIELD ASLD 8500 LLC, a Delaware limited liability

By: 
Name: ERIC J. TUNE
Its: AUTHORIZED SIGNATORY

By: 
Name: DEA McDONALD
Its: AUTHORIZED SIGNATORY

BLOSSOM ROCK COMMUNITY ALLIANCE, INC., an Arizona non-profit corporation

By: 
Name: PAUL LILLIS
Its: PRESIDENT

CITY OF APACHE JUNCTION, ARIZONA, an Arizona municipal corporation

By: _____
Name: Walter "Chip" Wilson
Its: Mayor

ATTEST:

Yvette McKinney
City Clerk

APPROVED AS TO FORM:


 5.13.26
R. Joel Stern
City Attorney

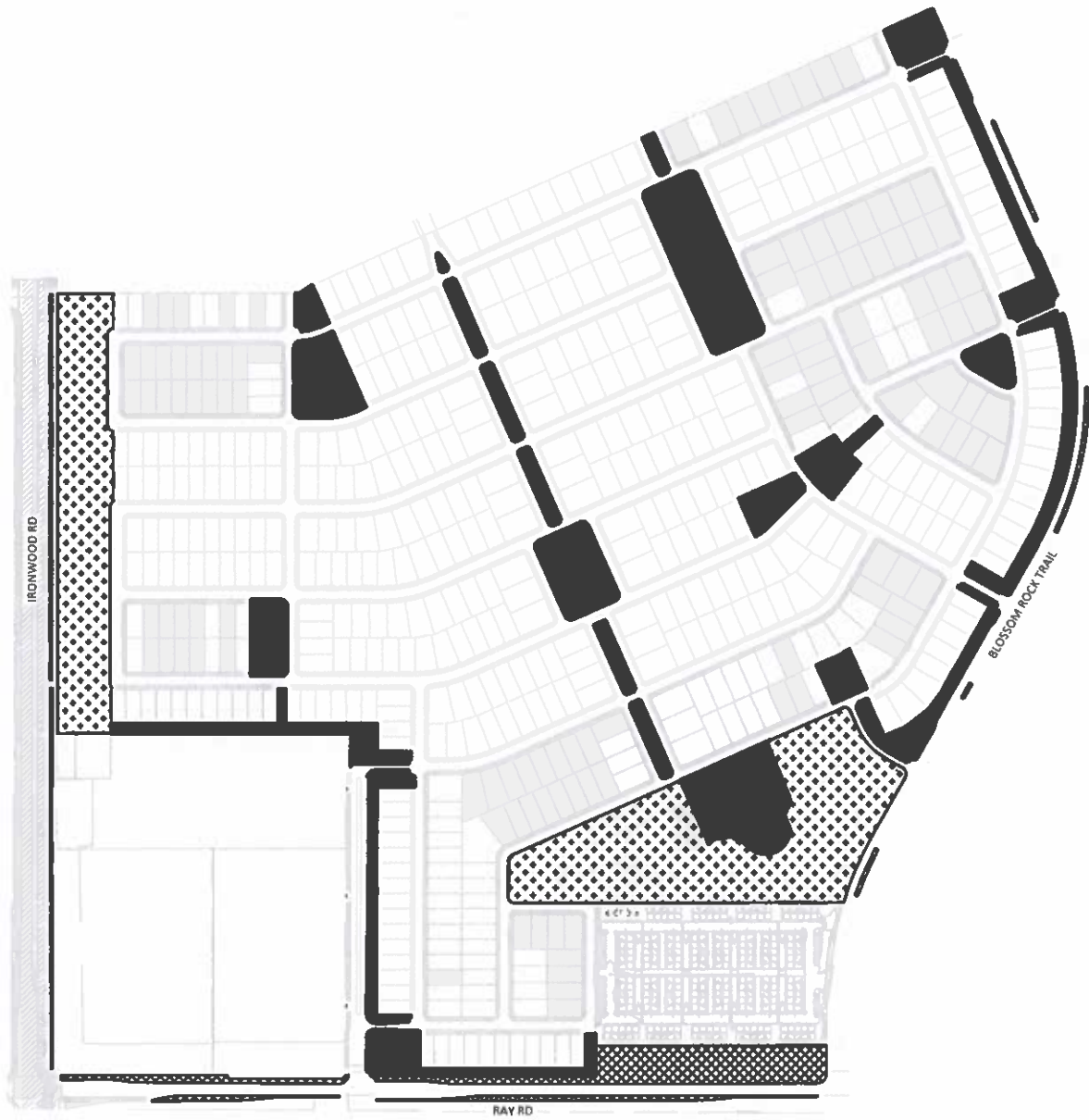
EXHIBIT B
Properties Included within Community Maintenance Agreement
(as of June 1, 2026)

Final Plat	Pinal County Recordation Number
Final Plat for Infrastructure for Superstition Vistas Development Unit 2 – Ray Avenue Phase 1	2022-084915
Final Plat for Infrastructure for Superstition Vistas Development Unit 2 - Ray Avenue Phase 2	2023-036172
Final Plat for Infrastructure for Superstition Vistas Development Units 1 and 2 – Ironwood Drive Phases 1 and 2	2022-084916
Final Plat for Infrastructure for Superstition Vistas Development Units 1 and 2 - Ironwood Drive Phase 3	2023-023735
Final Plat for Infrastructure for Superstition Vistas Development Unit 2 – Blossom Rock Trail Phase 1	2022-084917
Final Plat for Infrastructure for Superstition Vistas Development Unit 2 – Blossom Rock Trail Phase 2	MOD 2025-099075
Final Plat for Blossom Rock Phase 1	2022-084918
Final Plat for Blossom Rock Phase 2	2022-084919
Final Plat for Blossom Rock Phase 3A	2025-099068
Final Plat for Blossom Rock Phase 3B	2025-099071
Final Plat for Blossom Rock Parcel 8	2025-028016
Final Plat for Infrastructure for Superstition Vistas Development Unit 2 – Idaho Rd. Phase 1	2024-061056
Final Plat for Infrastructure for Superstition Vistas Development Unit 2 - Warner Ave. Phase 1	MOD 2024-061054
Final Plat for Infrastructure for Superstition Vistas Development Unit 2 - Warner Ave. Phase 5	MOD 2024-061058
Final Plat for Infrastructure for Superstition Vistas Development Unit 2 - Elliot Rd. Phase 1	MOD 2024-060155

EXHIBIT C
Map of Public/Private Parks and Open Space
(as of June 1, 2026)

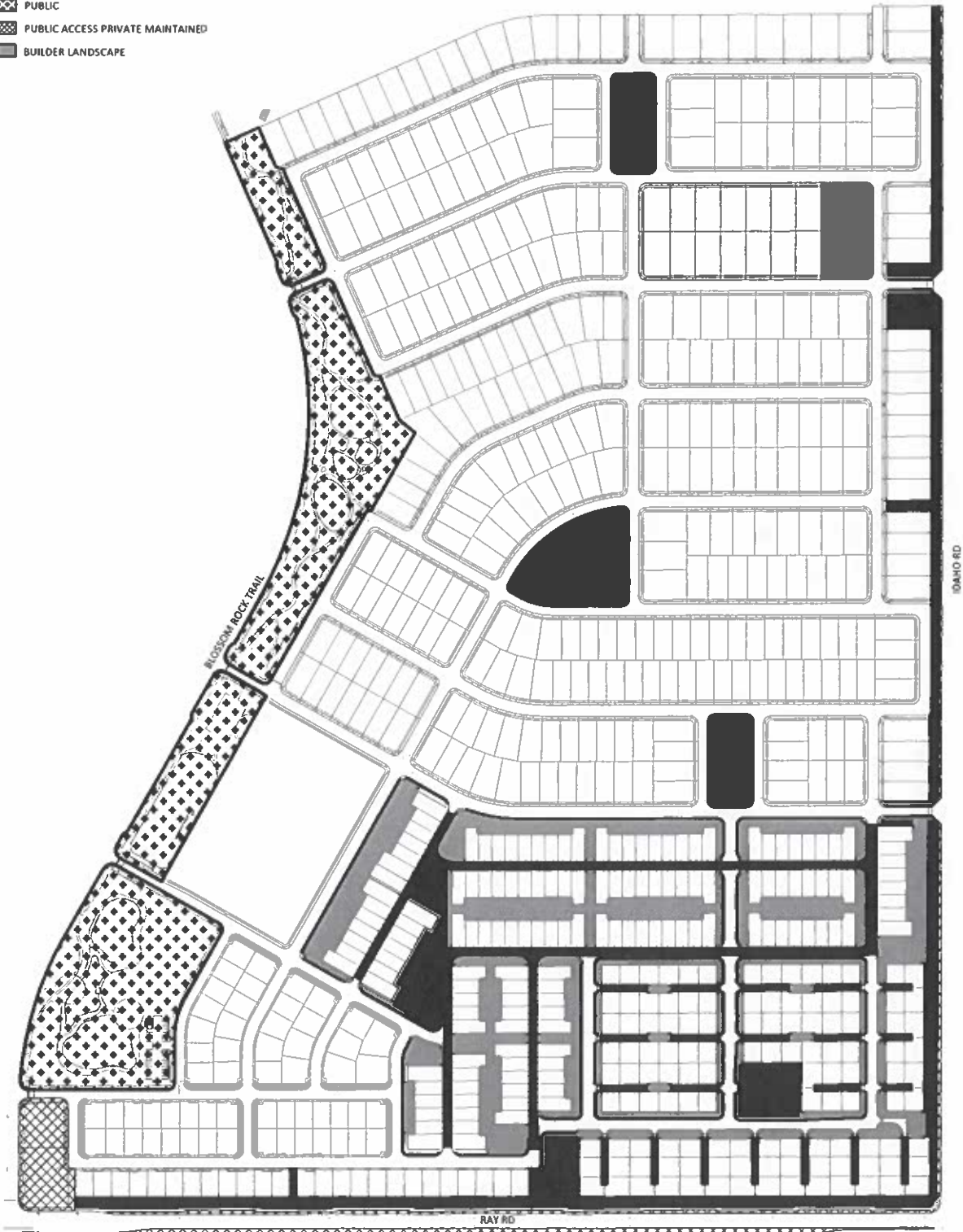
LEGEND

-  PRIVATE
-  PUBLIC
-  PUBLIC ACCESS PRIVATE MAINTAINED



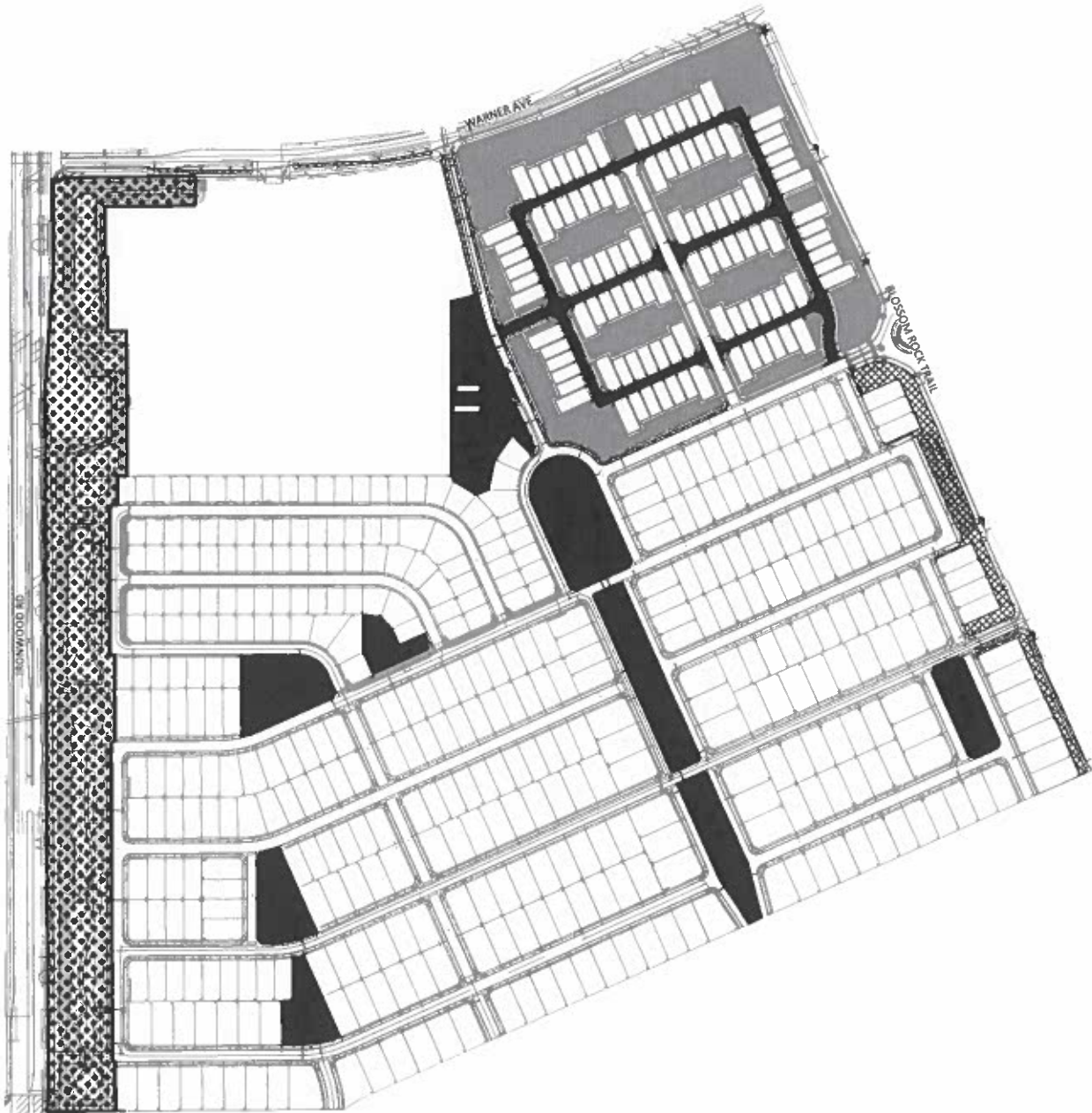
LEGEND

-  PRIVATE
-  PUBLIC
-  PUBLIC ACCESS PRIVATE MAINTAINED
-  BUILDER LANDSCAPE



LEGEND

- PRIVATE
- ⊗ PUBLIC
- ▨ PUBLIC ACCESS PRIVATE MAINTAINED
- BUILDER LANDSCAPE



LEGEND

- PRIVATE
- ▨ PUBLIC ACCESS PRIVATE MAINTAINED

