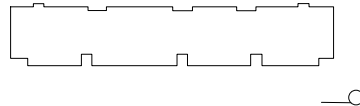




BUILDING A - RENNICK FACING PERSPECTIVE



Exhibit #5 Proposed Elevations and Floor Plans

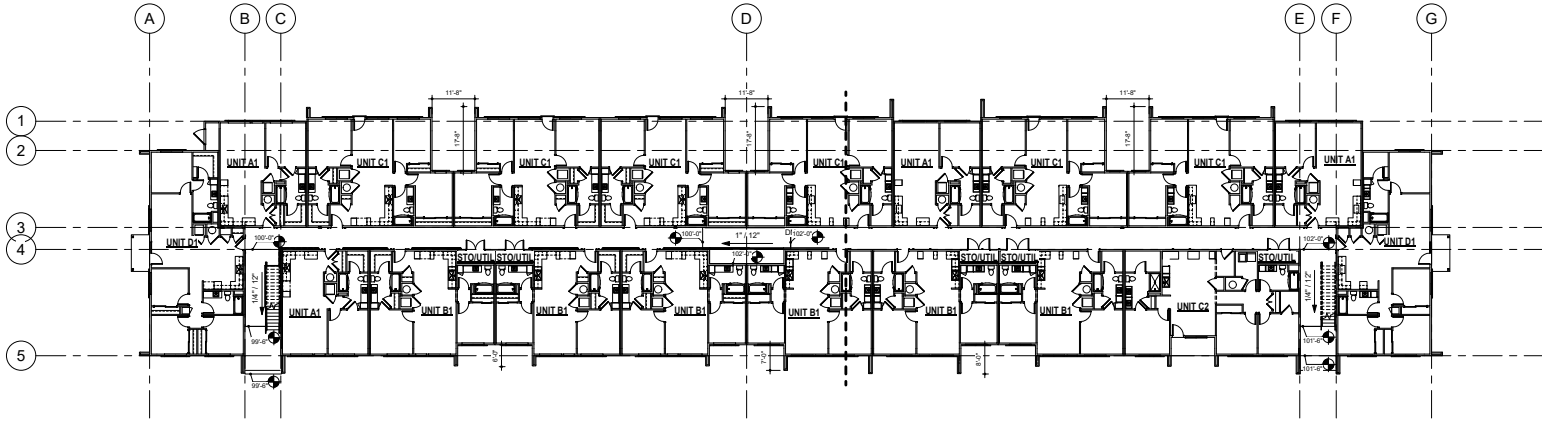


APACHE JUNCTION

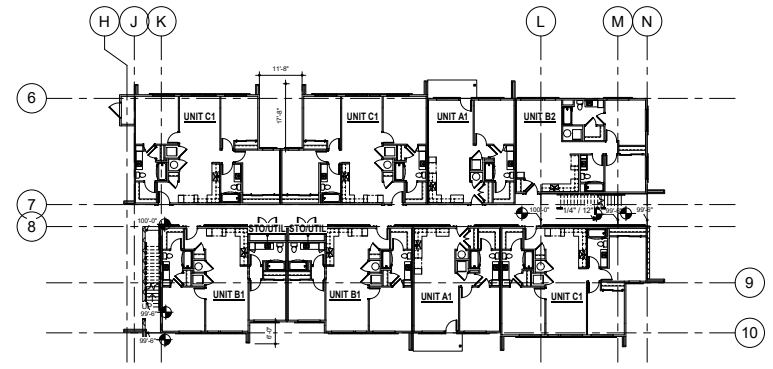
APACHE JUNCTION, ARIZONA

COVER SHEET | 04/15/26 | KA# 225084

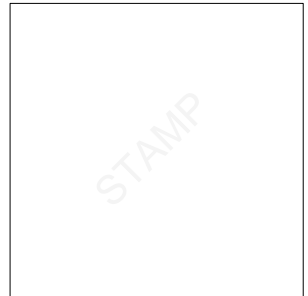
A00



2 BUILDING TYPE A - FLOOR PLAN TYP. - SD
1/16" = 1'-0"



1 BUILDING TYPE B - FLOOR PLAN TYP. - SD
1/16" = 1'-0"

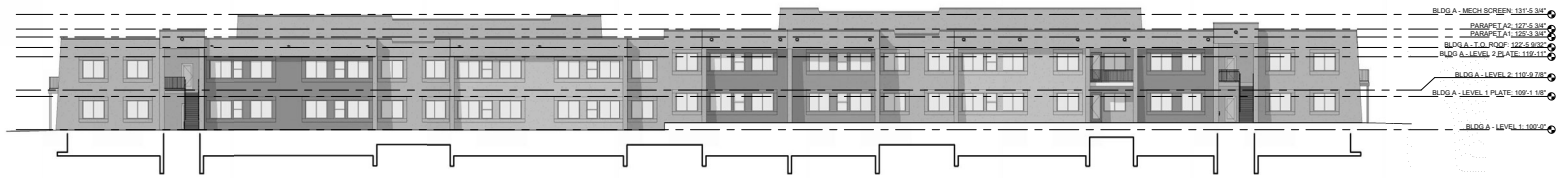


APACHE JUNCTION
APACHE JUNCTION, ARIZONA
FLOOR PLANS | 04/15/26 | KA# 225084

A03



4/15/2026 10:41 AM
 A:\ARCH\2025\25084_KA#225084_A03\APACHE_JUNCTION\FLOOR_PLANS\A03.dwg

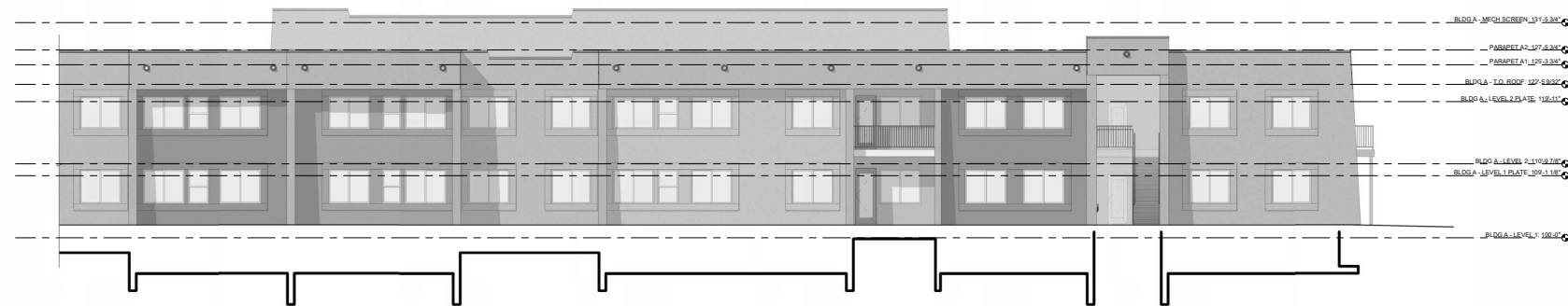


- BLDG A - MECH SCREEN 131'-5.38"
- PARAPET A2 127'-5.38"
- PARAPET A1 125'-3.38"
- BLDG A - TO ROOF 122'-5.93"
- BLDG A - LEVEL 2 PLATE 119'-11"
- BLDG A - LEVEL 2 117'-6.78"
- BLDG A - LEVEL 1 PLATE 109'-1.18"
- BLDG A - LEVEL 1 102'-2"

MATERIAL LEGEND	
	STUCCO - SW9086 SAND DUNE OR EQUAL
	STUCCO - SW9281 CARIBBEAN CORAL OR EQUAL
	STUCCO - SW9281 CLASSICAL GOLD OR EQUAL
	STUCCO - SW9312 ROCKWOOD JADE OR EQUAL
	CMU

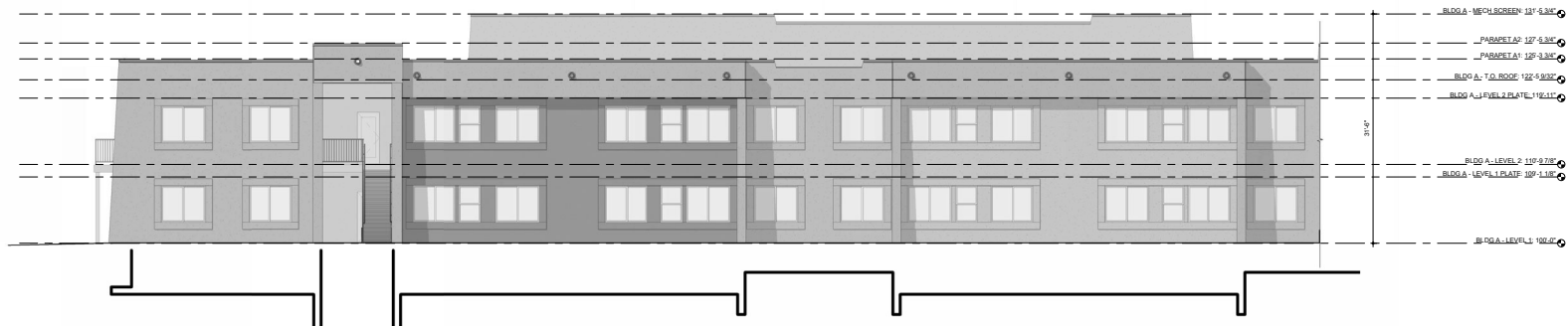
BUILDING MATERIALS	
TOTAL FACADE AREA	: 8,454 SF
OPENINGS	: 1,983 SF 23%
STUCCO	: 6,554 SF 78%
CMU BLOCK - STACKED	:

3 INTERNAL ELEVATION - BUILDING TYPE A - SD
1/16" = 1'-0"



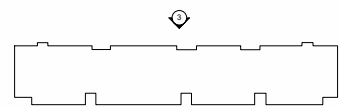
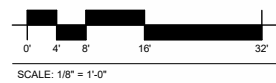
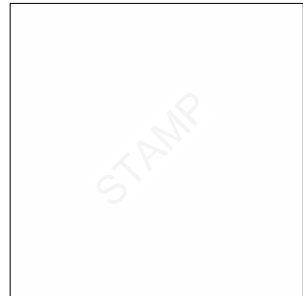
- BLDG A - MECH SCREEN 131'-5.38"
- PARAPET A2 127'-5.38"
- PARAPET A1 125'-3.38"
- BLDG A - TO ROOF 122'-5.93"
- BLDG A - LEVEL 2 PLATE 119'-11"
- BLDG A - LEVEL 2 117'-6.78"
- BLDG A - LEVEL 1 PLATE 109'-1.18"
- BLDG A - LEVEL 1 102'-2"

2 INTERNAL ELEVATION - BUILDING TYPE A, ENLARGED RIGHT - SD
1/8" = 1'-0"



- BLDG A - MECH SCREEN 131'-5.38"
- PARAPET A2 127'-5.38"
- PARAPET A1 125'-3.38"
- BLDG A - TO ROOF 122'-5.93"
- BLDG A - LEVEL 2 PLATE 119'-11"
- BLDG A - LEVEL 2 117'-6.78"
- BLDG A - LEVEL 1 PLATE 109'-1.18"
- BLDG A - LEVEL 1 102'-2"

1 INTERNAL ELEVATION - BUILDING TYPE A, ENLARGED LEFT - SD
1/8" = 1'-0"

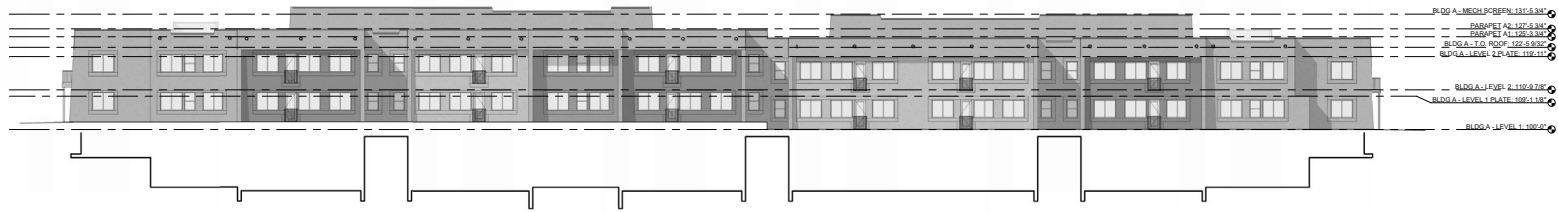


APACHE JUNCTION

APACHE JUNCTION, ARIZONA
BLDG A - ELEVATIONS | 04/15/26 | KA# 225084

A05

4/15/2025 10:51 AM \\snp\shared\225084\225084_A05\Drawings\A05 - ELEVATIONS.dwg



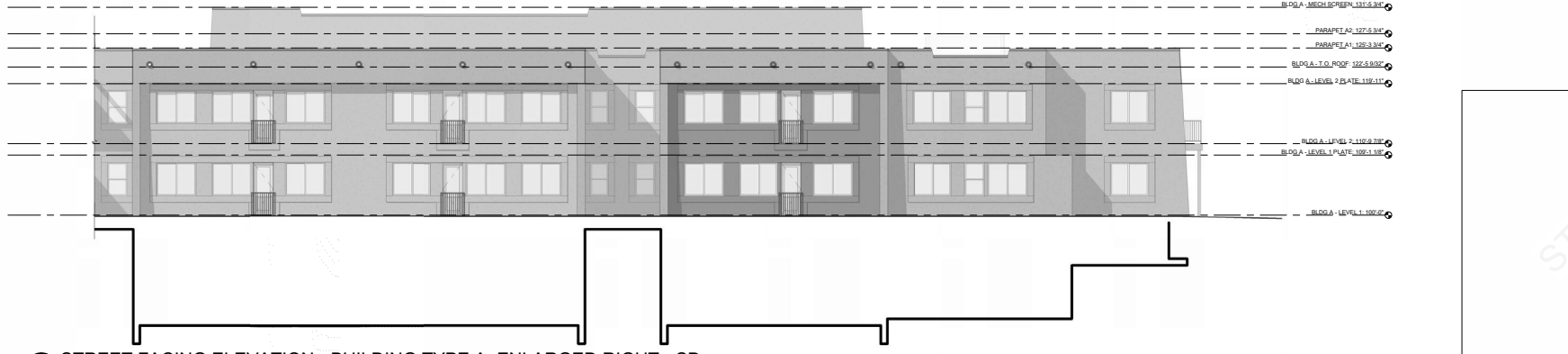
MATERIAL LEGEND	
	STUCCO - SW2586 SAND DUNE OR EQUAL
	STUCCO - SW2584 CARIBBEAN CORAL OR EQUAL
	STUCCO - SW2583 CLASSICAL GOLD OR EQUAL
	STUCCO - SW2512 ROOKWOOD JADE OR EQUAL
	CMU

BUILDING MATERIALS	
TOTAL FACADE AREA	: 6,960 SF
OPENINGS	: 1,920 SF 22%
STUCCO	: 6,920 SF 78%
CMU BLOCK - STACKED	:

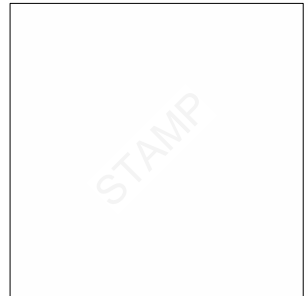
3 STREET FACING ELEVATION - BUILDING TYPE A - SD
1/16" = 1'-0"



2 STREET FACING ELEVATION - BUILDING TYPE A, ENLARGED LEFT - SD
1/8" = 1'-0"

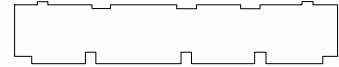


1 STREET FACING ELEVATION - BUILDING TYPE A, ENLARGED RIGHT - SD
1/8" = 1'-0"



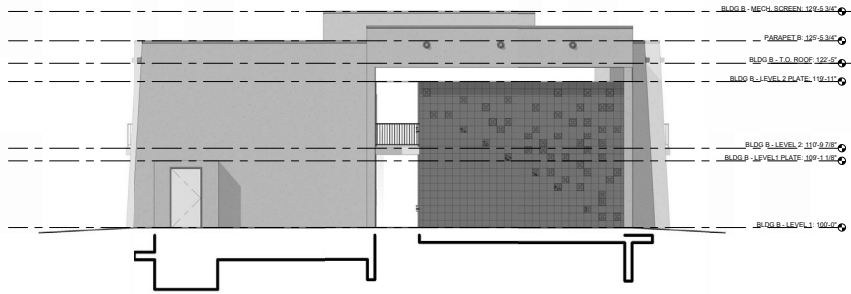
KEPHART

SCALE: 1/8" = 1'-0"

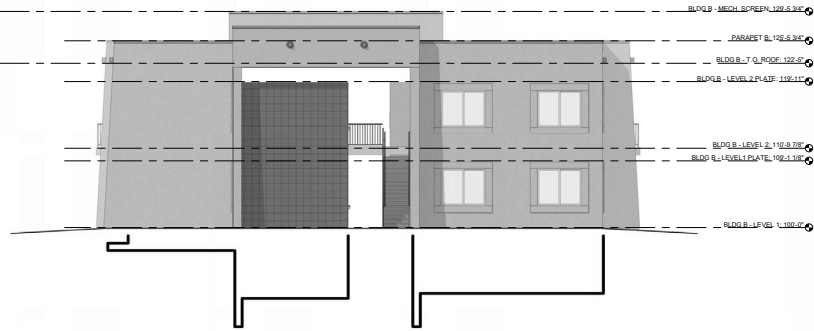


APACHE JUNCTION
APACHE JUNCTION, ARIZONA
BLDG A - ELEVATIONS | 04/15/26 | KA# 225084 **A06**

4/15/2026 10:57 AM A:\30461\225084 - Apache Junction\225084 - Apache Junction\Drawings\A06.dwg



4 LEFT ELEVATION - BUILDING TYPE B - SD
1/8" = 1'-0"



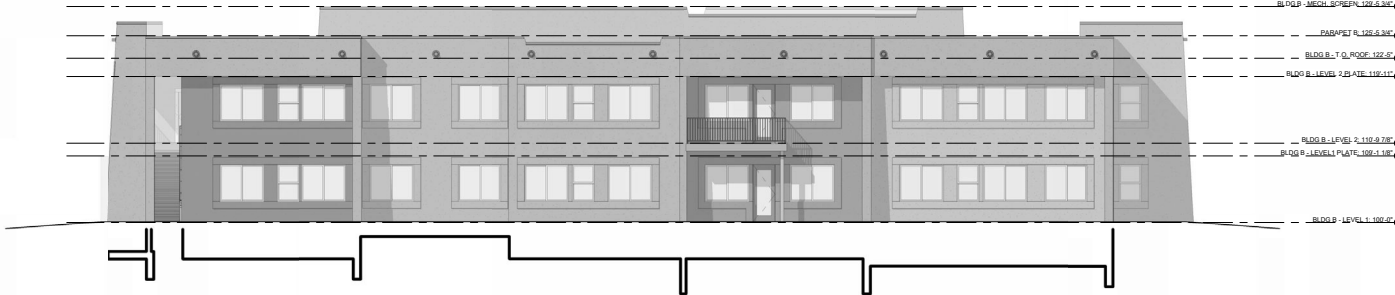
3 RIGHT ELEVATION - BUILDING TYPE B - SD
1/8" = 1'-0"

MATERIAL LEGEND	
	STUCCO - SW9086 SAND DUNE OR EQUAL
	STUCCO - SW9284 CARIBBEAN CORAL OR EQUAL
	STUCCO - SW9281 CLASSICAL GOLD OR EQUAL
	STUCCO - SW9312 ROCKWOOD JADE OR EQUAL
	CMU

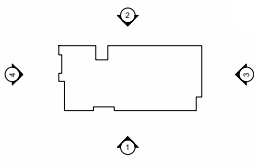
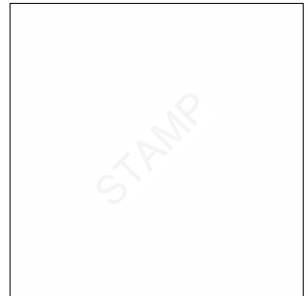
BUILDING MATERIALS	
TOTAL FACADE AREA :	
ORNLINGS :	
STUCCO :	
CMU BLOCK - STACKED :	



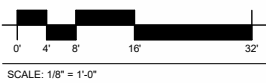
2 REAR ELEVATION - BUILDING TYPE B - SD
1/8" = 1'-0"



1 FRONT ELEVATION - BUILDING TYPE B - SD
1/8" = 1'-0"



KEPHART



APACHE JUNCTION

APACHE JUNCTION, ARIZONA
BLDG B - ELEVATIONS | 04/15/26 | KA# 225084

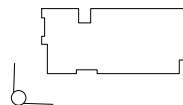
A08

4/15/2025 10:53 AM \\snp\shared\225084_ApacheJunction\Drawings\A08.dwg



BUILDING - INTERNAL SITE PERSPECTIVE

 **KEPHART**



APACHE JUNCTION

APACHE JUNCTION, ARIZONA
ARCHITECTURAL RENDERING | 04/15/26 | KA# 225084

A10