

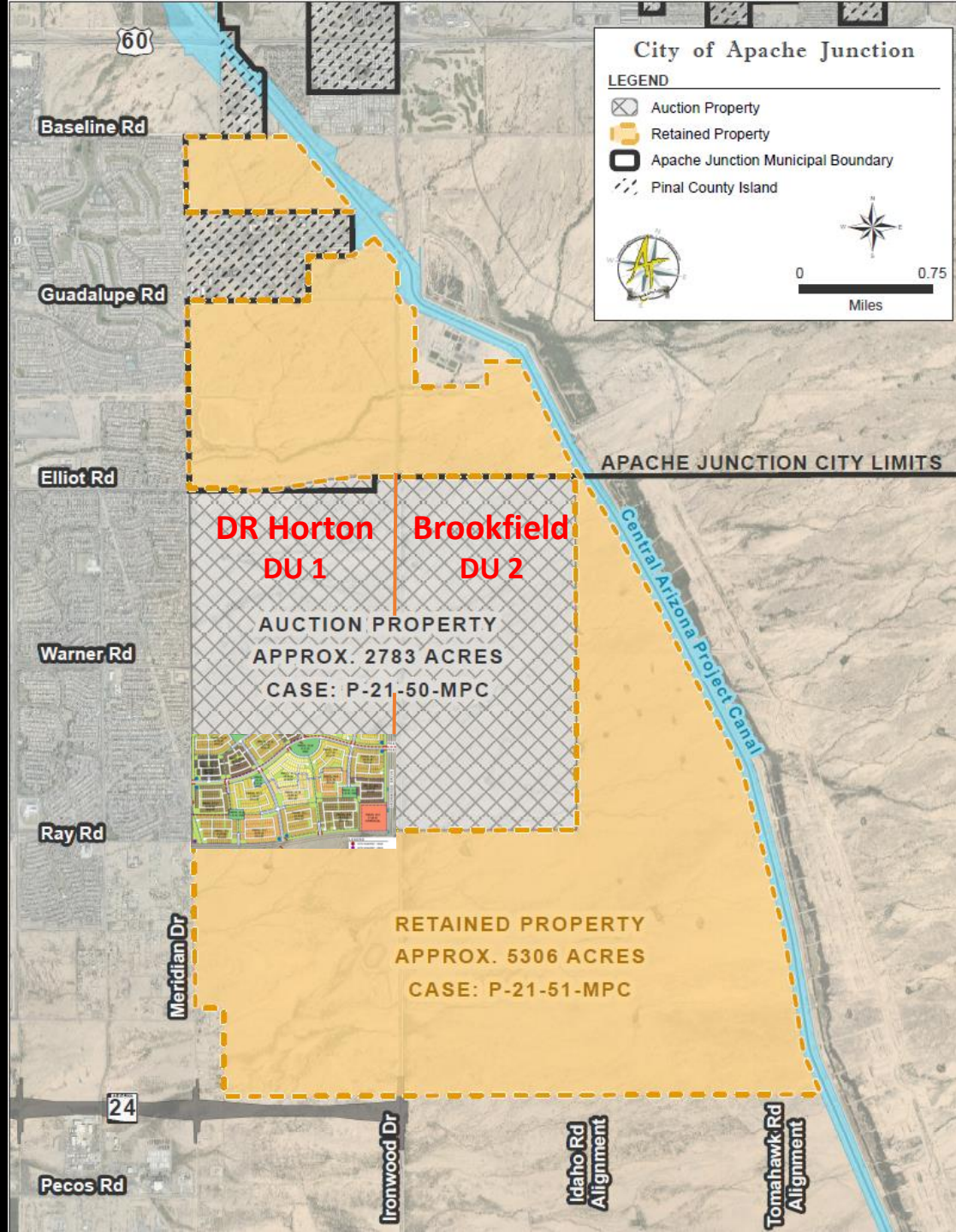
City Council Work Session for Superstition Vistas

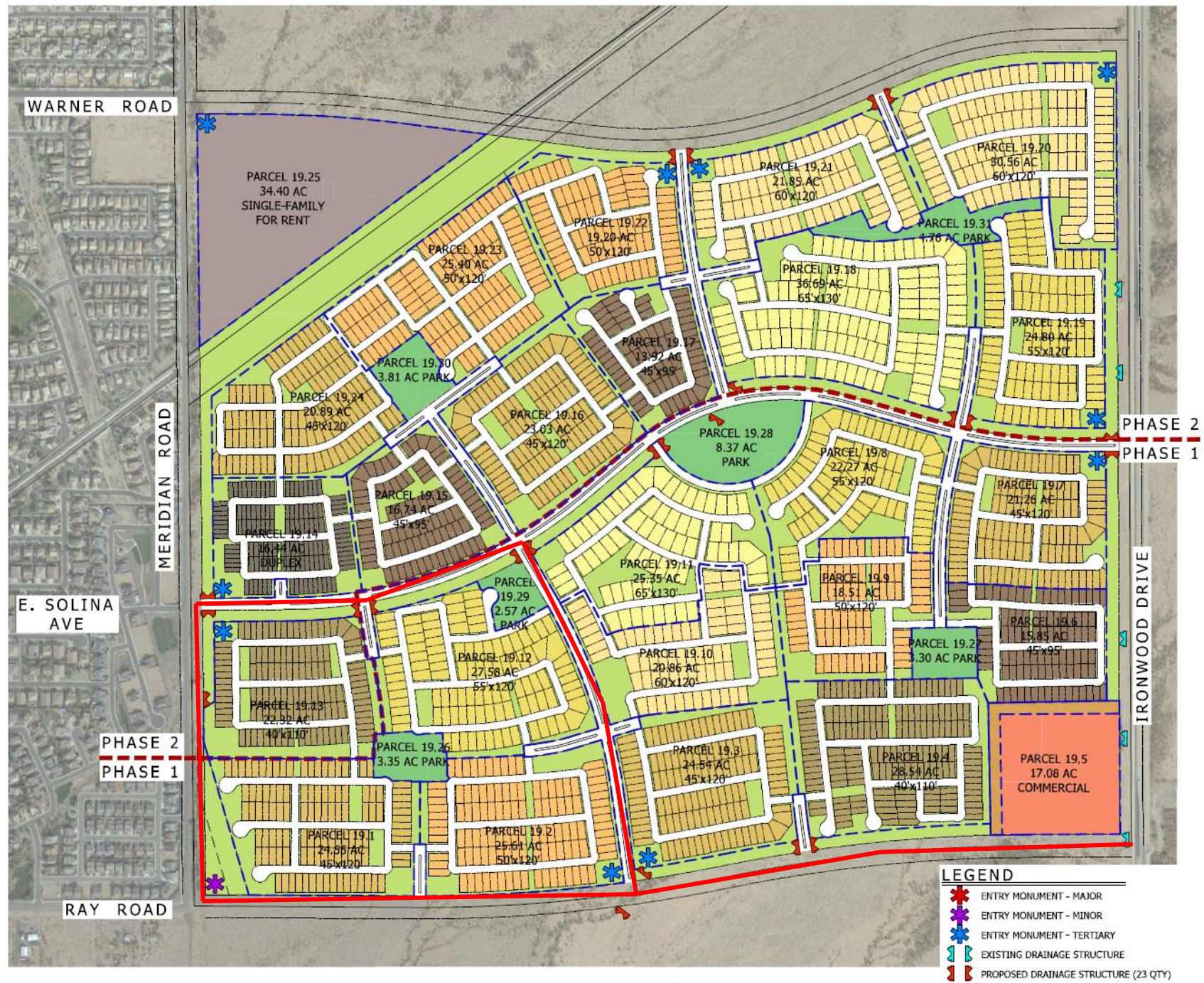
1. Final Plat for Reverence at Superstition Vistas Parcel 19.1
2. Final Plat for Reverence at Superstition Vistas Parcel 19.2
3. Final Plat for Reverence at Superstition Vistas 19.12
4. Final Plat for Reverence at Superstition Vistas 19.13
5. Map of Dedication Phase 1A



City of Apache Junction
August 16, 2022







439
Total Lots

Staff Recommendation

1. Staff is supportive of all four (4) Final Plats and Map of Dedication
 - Conformance with the preliminary plat
 - Conformance Auction Property MPC
 - Conformance with the Superstition Vistas Master Infrastructure Reports



3.1.3 Site Plans and Subdivision Plats

The most detailed level of planning and development review occurs with the approval for a site plan and/or a preliminary subdivision plat. This level of planning provides site-specific details of individual parcels and will identify land uses permitted within the site plan and/or preliminary subdivision plat. Site plans shall be submitted and approved as set forth in the City Code. A preliminary subdivision plat or site plan must demonstrate compliance with the MPC Plan and the Development Unit Plan. Unless otherwise modified by the MPC Plan, the City's subdivision standards are applicable to the development of the Property. Preliminary subdivision plats shall be submitted to the Subdivision Committee and processed in accordance with the City's subdivision code. Final subdivision plats must be submitted for review and approval by the City Council in accordance with the City's subdivision code.

**Subdivision Committee per
City Code (2-1-25a)**

**City Engineer
Planning Manager
Principal Engineer/Principal
Planner**

