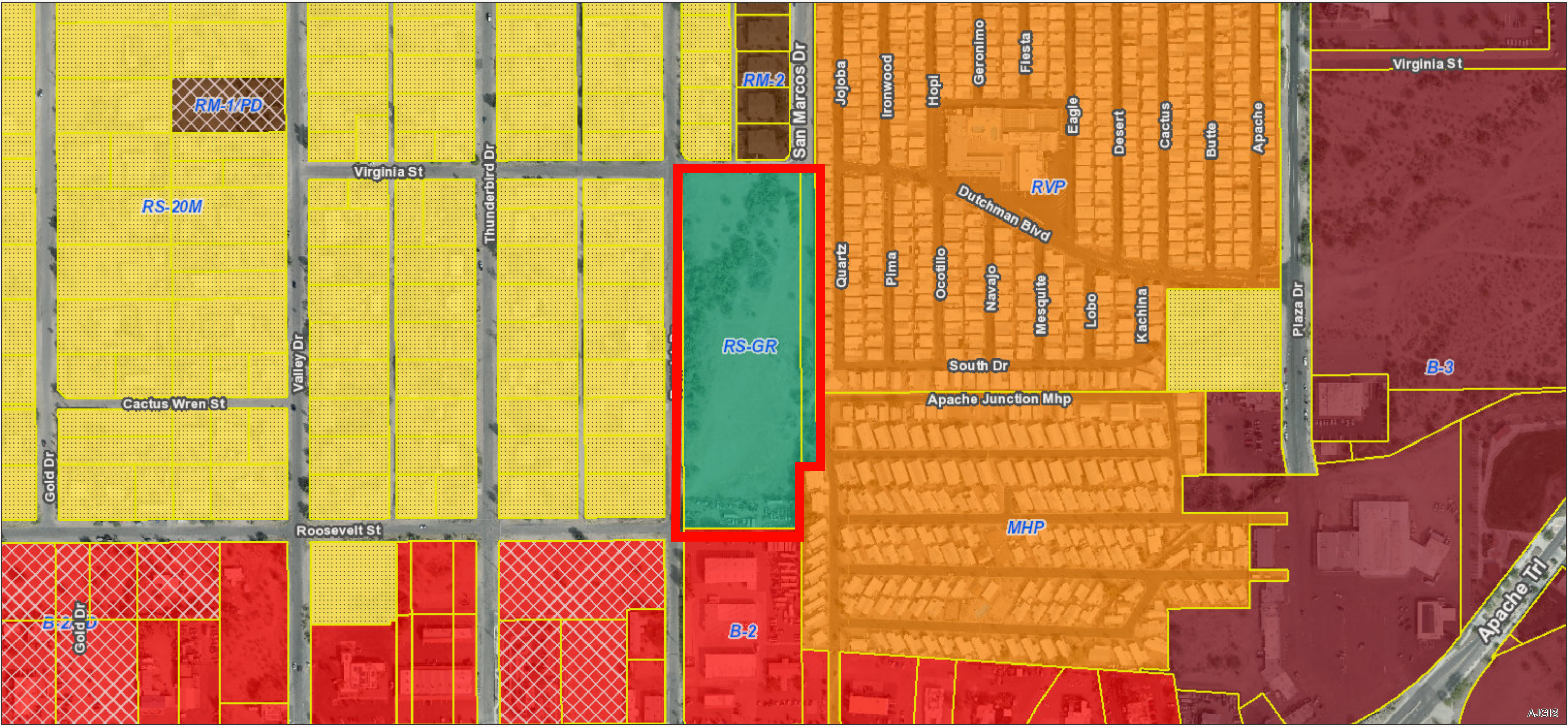


GIS Map

DISCLAIMER: This map was produced without benefit of a field survey and is not the intended use. The use of this map is for informational purposes only and the City of Apache Junction makes no warranty, expressed or implied, regarding the reliability of the information provided.



**LEGEND**

Street Names

**Municipal Boundary**

- Apache Junction
- Pinal County
- County Boundary

**Parcels**

- CITY OF APACHE JUNCTION

PINAL COUNTY	B-3	PI	RS-10/PD	RS-54/PD	RS-GR	State Land Sold
<b>Zoning Districts</b>	B-4	PI/PD	RS-10M	RS-54M	RS-GR/PD	
B-1	B-4/PD	RM-1	RS-20	RS-54M/PD	RVP	
B-1, RS-20M	B-5	RM-1/PD	RS-20/PD	RS-7	RVP/PD	
B-1/PD	B-5/PD	RM-2	RS-20M	RS-7/PD	MPC	
B-2	MHP	RM-2/PD	RS-5/PD	RS-7M	State Land Annexation	
B-2/PD	MHP/PD	RS-10	RS-54	RS-7M/PD	SR24 Right-of-way	

City of Apache Junction

August 1, 2022

0 0.045 0.09 mi