



CITY OF APACHE JUNCTION

PRESENTED JANUARY 13, 2016

ASU Capstone Class 2016 – Dr. Joochul Kim

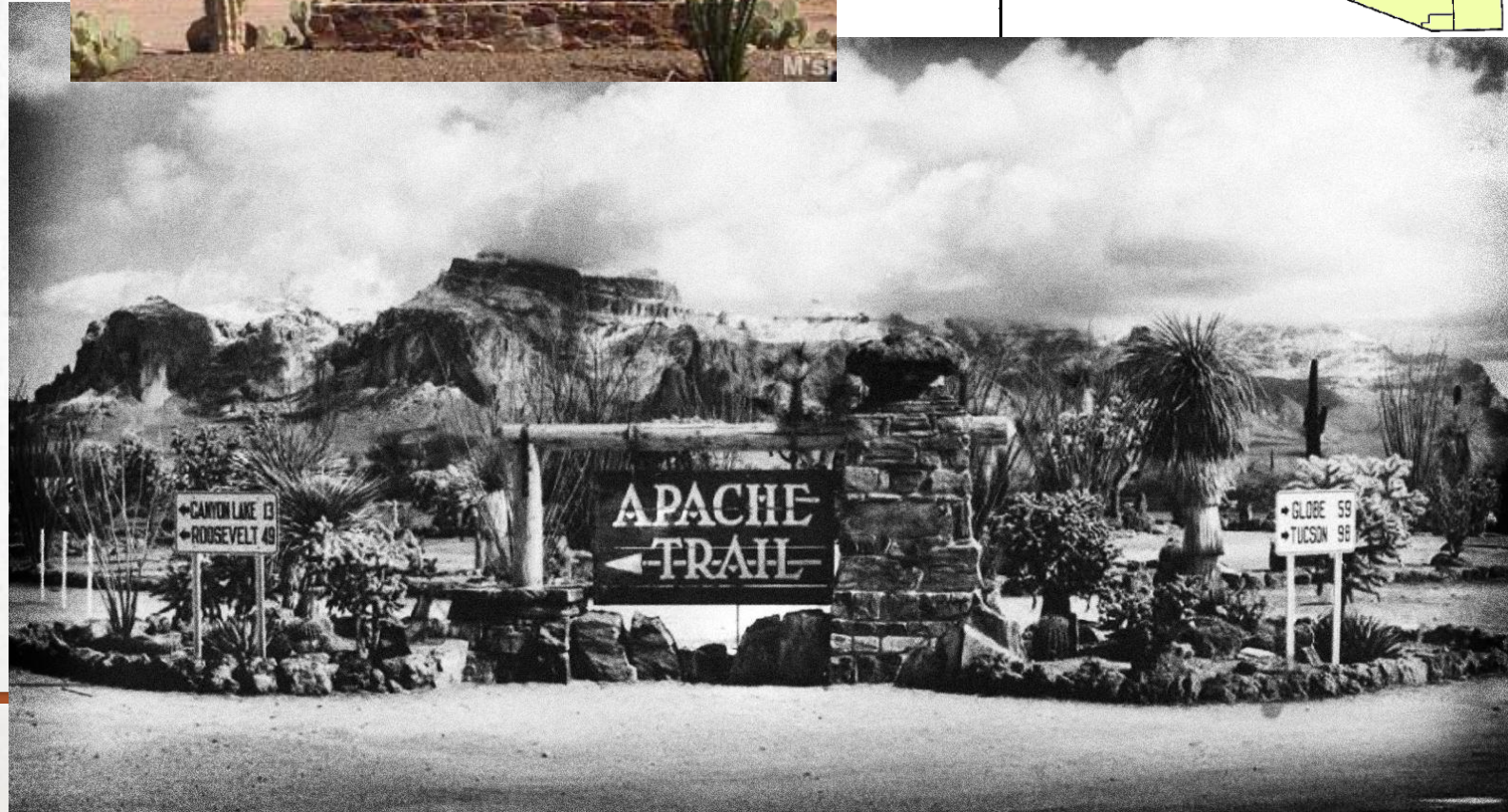
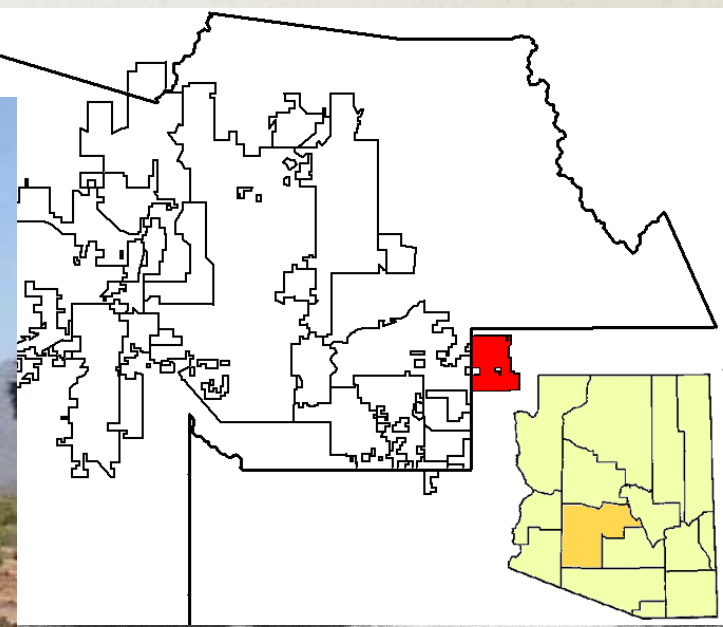
OVERVIEW

- Background/General Plan
- Existing Multi-Modal Planning
 - Circulation Network
 - Sidewalk
 - Bike Routes
 - Equestrian Trails
 - Open Space and Parks
- Downtown versus Lost Dutchman Heights
- Future Vision and Priorities
- Resources

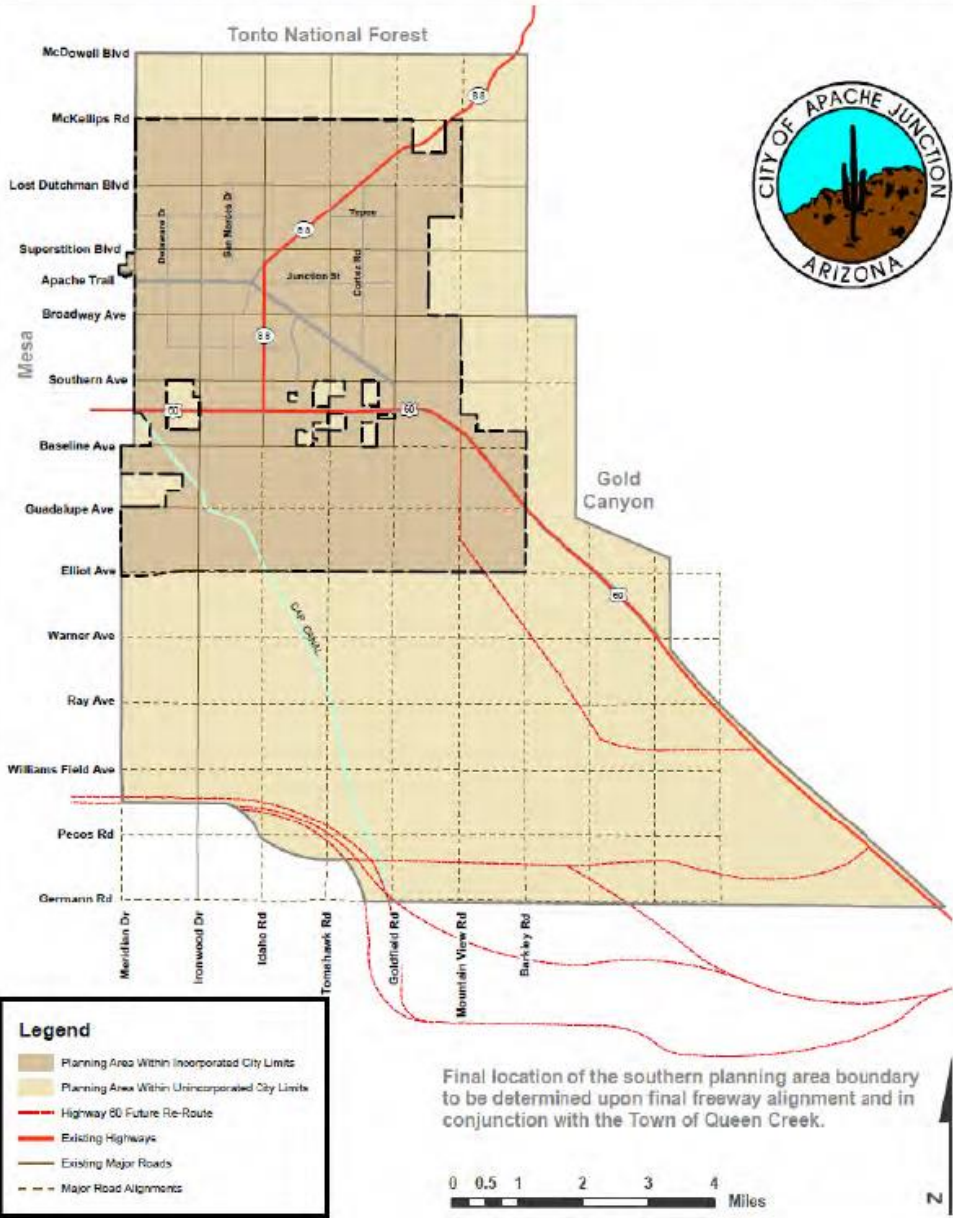


BACKGROUND OF APACHE JUNCTION

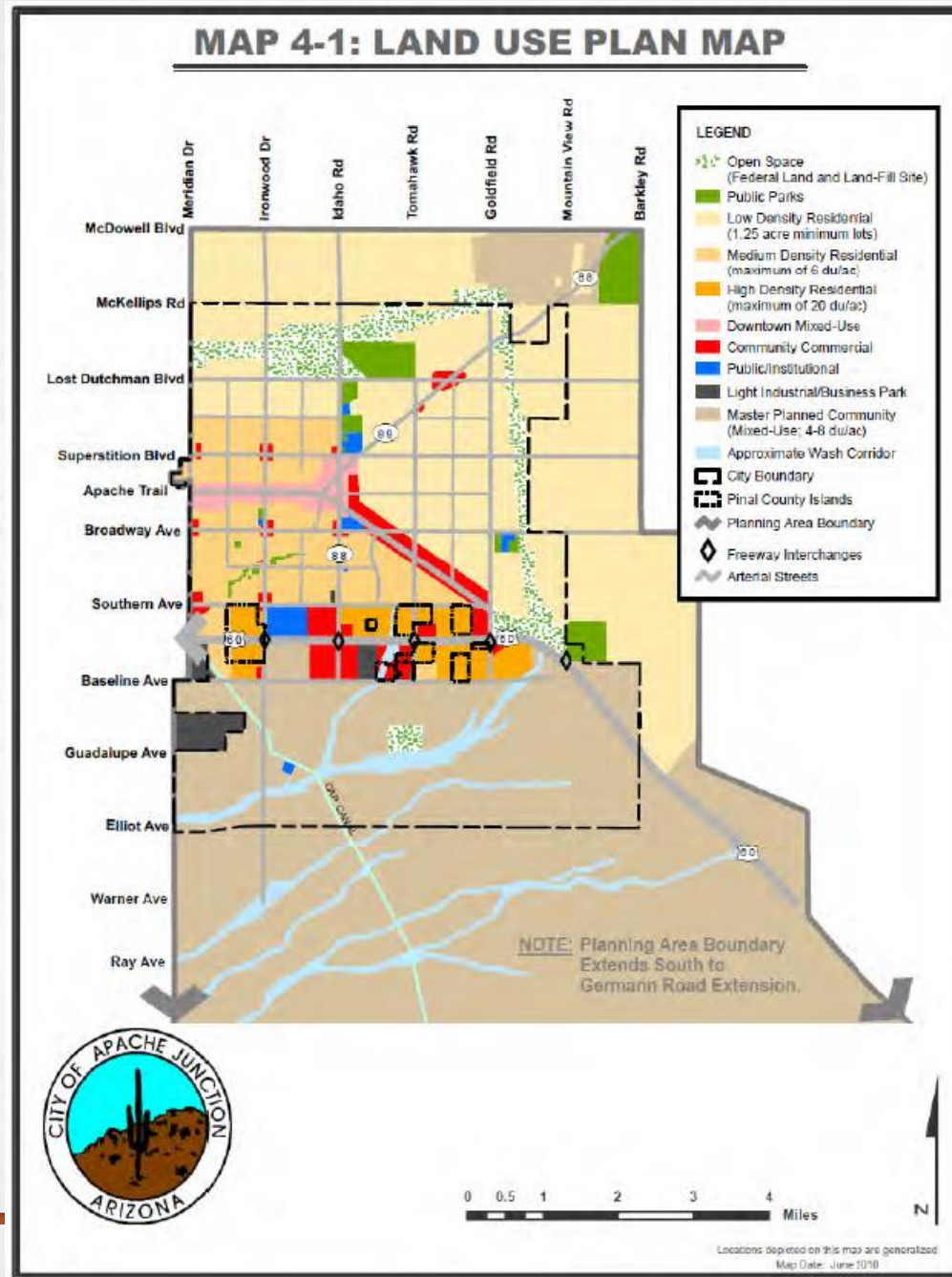
- Incorporated into a city: 1978
- Population: 35,840 (2010 census)
- City Limit Area: 35 square miles
- County: Pinal/Maricopa
- No municipal utilities
- Attractions
 - Superstition Mountains
 - Goldfield Ghost Town
 - Canyon Lake
 - Superstition Mountain Museum



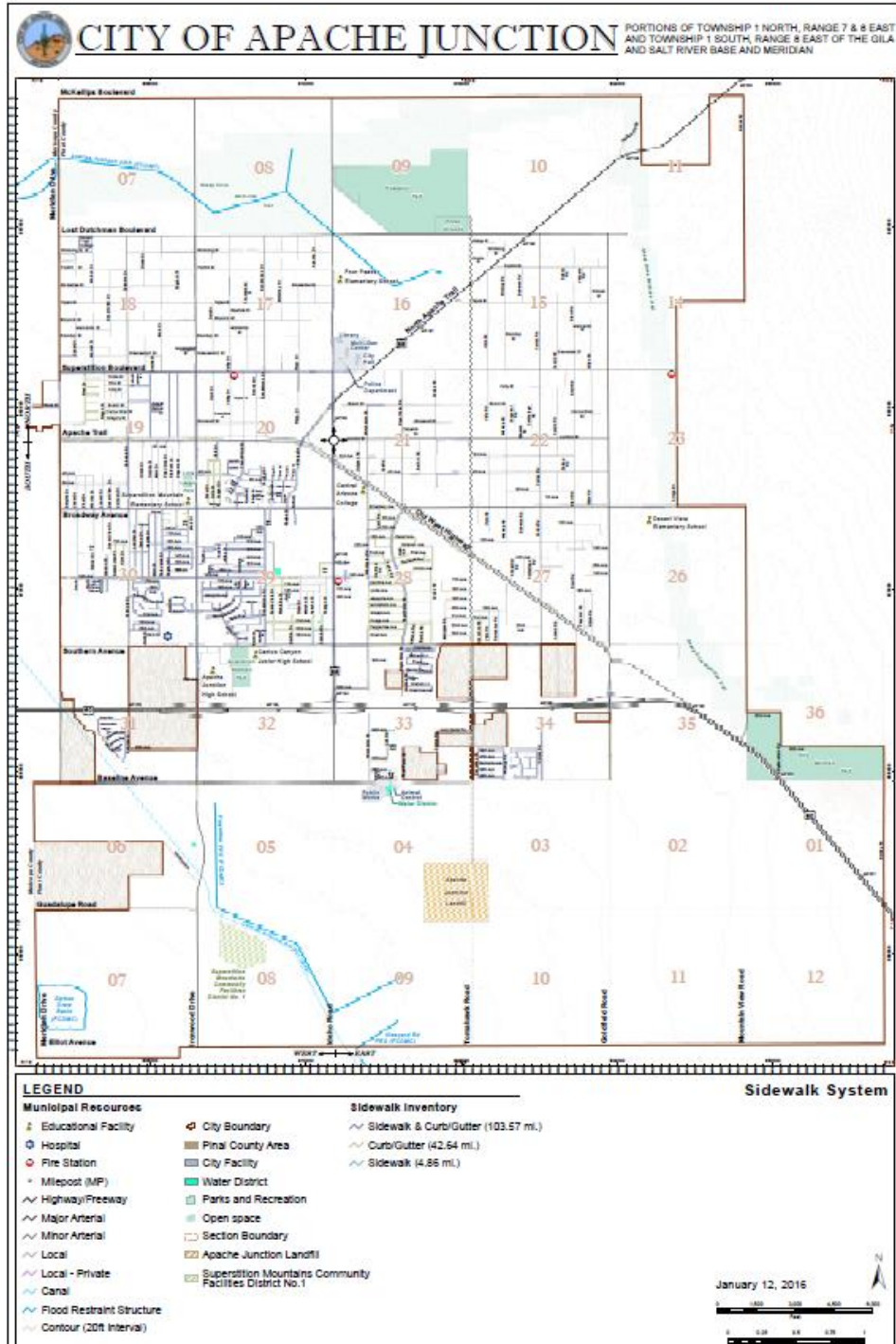
MAP 4-2: APACHE JUNCTION PLANNING AREA



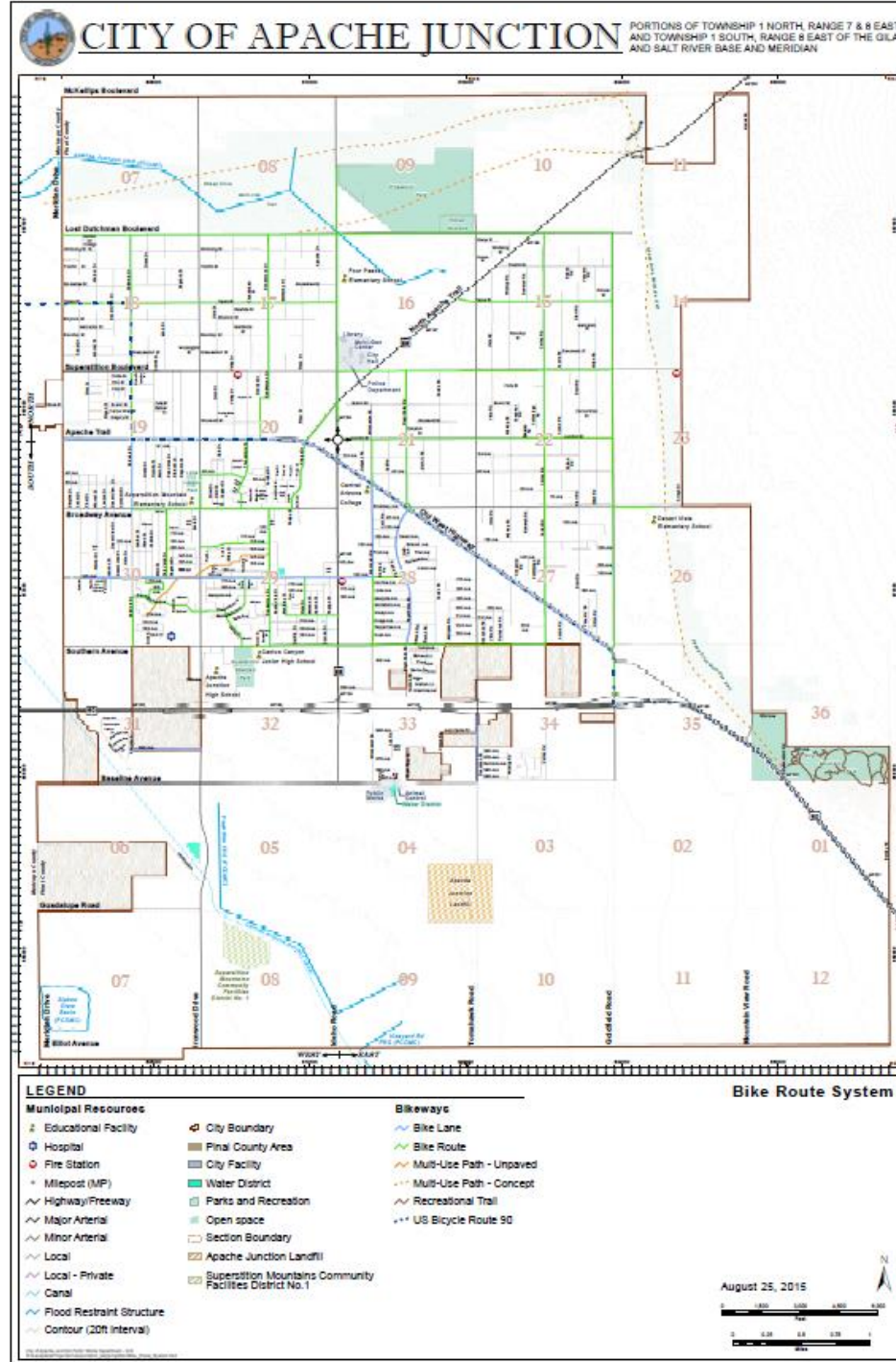
2010 GENERAL PLAN



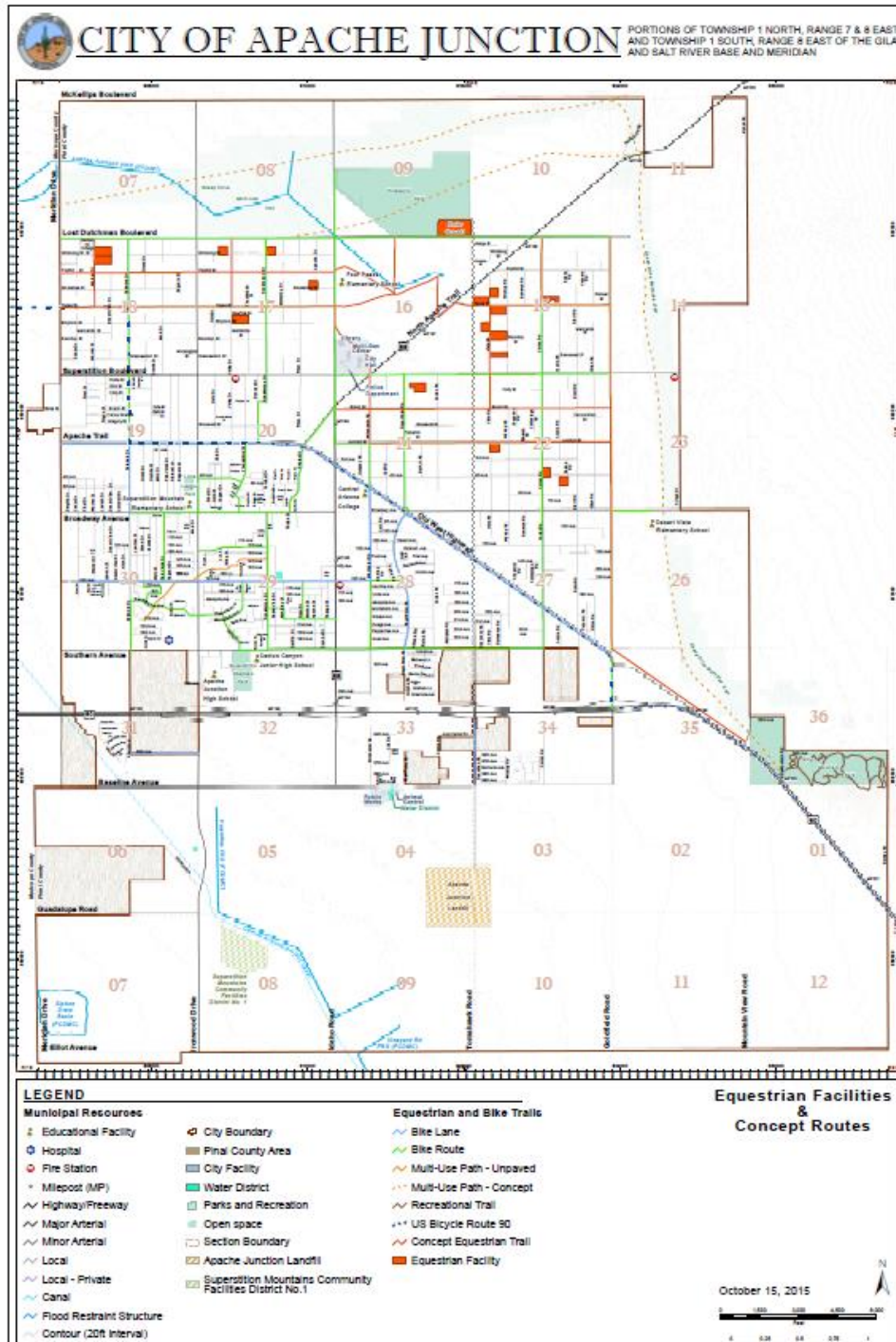
SIDEWALK SYSTEM



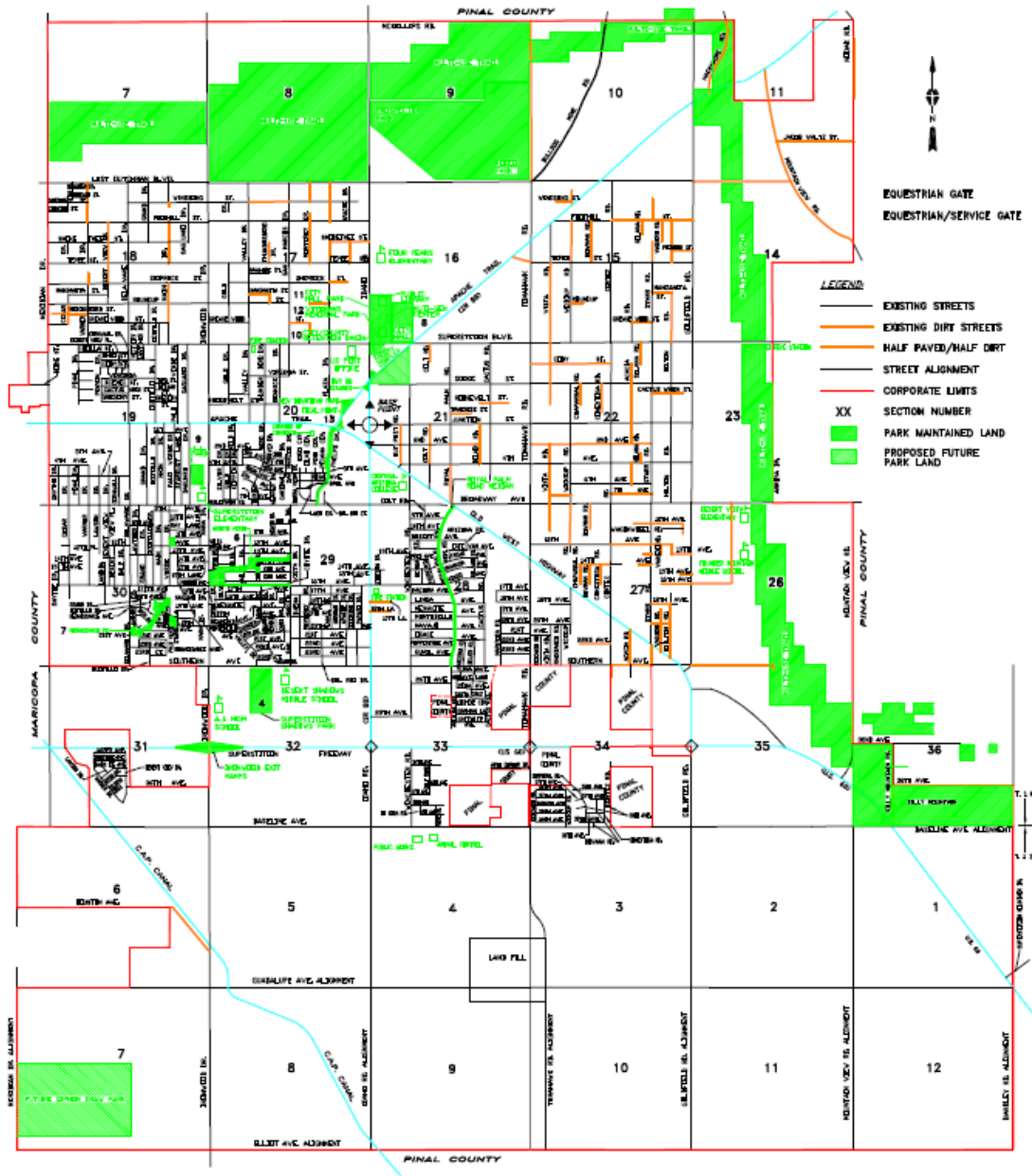
BIKE ROUTE SYSTEM



EQUESTRIAN TRAILS AND CONCEPTS



CURRENTLY MAINTAINED PARKS AND TRAILS



CITY OF APACHE JUNCTION PARKS AND RECREATION MAINTAINED FACILITIES

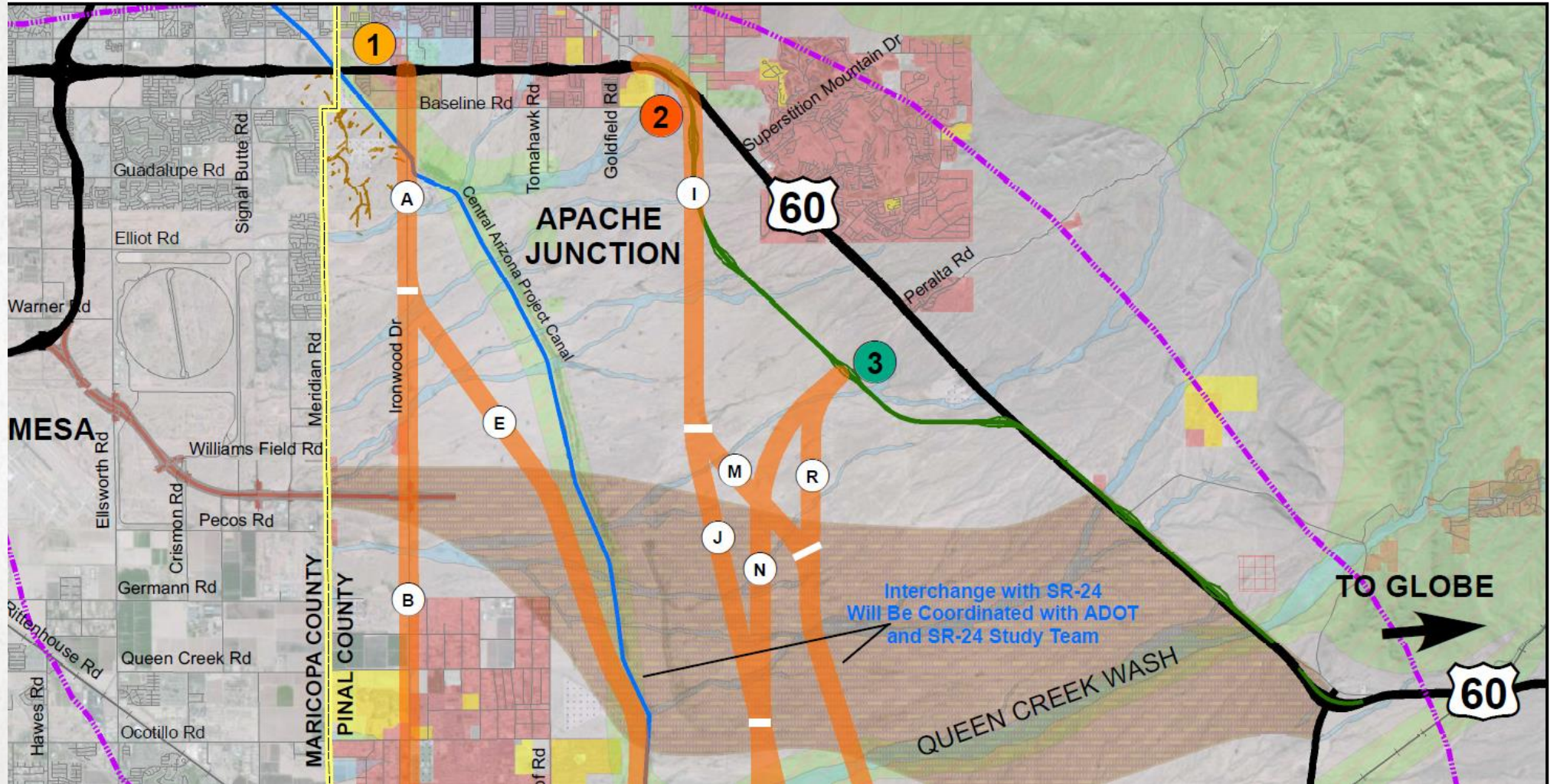
PVD T₁ 1 1/4 & T₁ 1 1/2, B₁ 7 & B₁ 8, C₁ & C₁ 1/2, D₁ & D₁ 1/2

REVISÉD JULY, 2008 LAG

FUTURE NORTH/SOUTH FREEWAY ALIGNMENT

COMMENT FORM MAP

Northern Possible Route Alternatives



DOWNTOWN CONCEPTS

③ The Trailhead Marketplace

With Fry's and Walgreens as major tenants of the Trailhead Marketplace, the citizens of Apache Junction have access to a range of products and the City sees an expanded source of revenue to easily provide needed community services and facilities. In contrast to the "strip" commercial development that is present along other portions of The Apache Trail, the Marketplace is a master-planned commercial center with stores, restaurants and offices. The large-scale and open-air nature of the Marketplace makes it attractive to a regional trade area, as well as nearby neighborhoods. The Rock Shelters "Iron" Valley Park.

③ Center for Health, Wellness and Living

A centerpiece of Tucson — the presence of Central Arizona College, a large senior population, a supportive City government, quality of life amenities, an expanded business community, and others — have made Apache Junction a preferred location for a well-regarded medical living and medical facility. The Center for Health, Wellness and Living includes a state-of-the-art, multi-story hospital that specializes in the provision of medical services to seniors, and includes medical research and provides extensive education and services pertaining to health promotion and disease prevention. An adjunct to the main facility is an extended living neighborhood that caters to seniors who desire a measure of independence while having access to the assistance they may need.



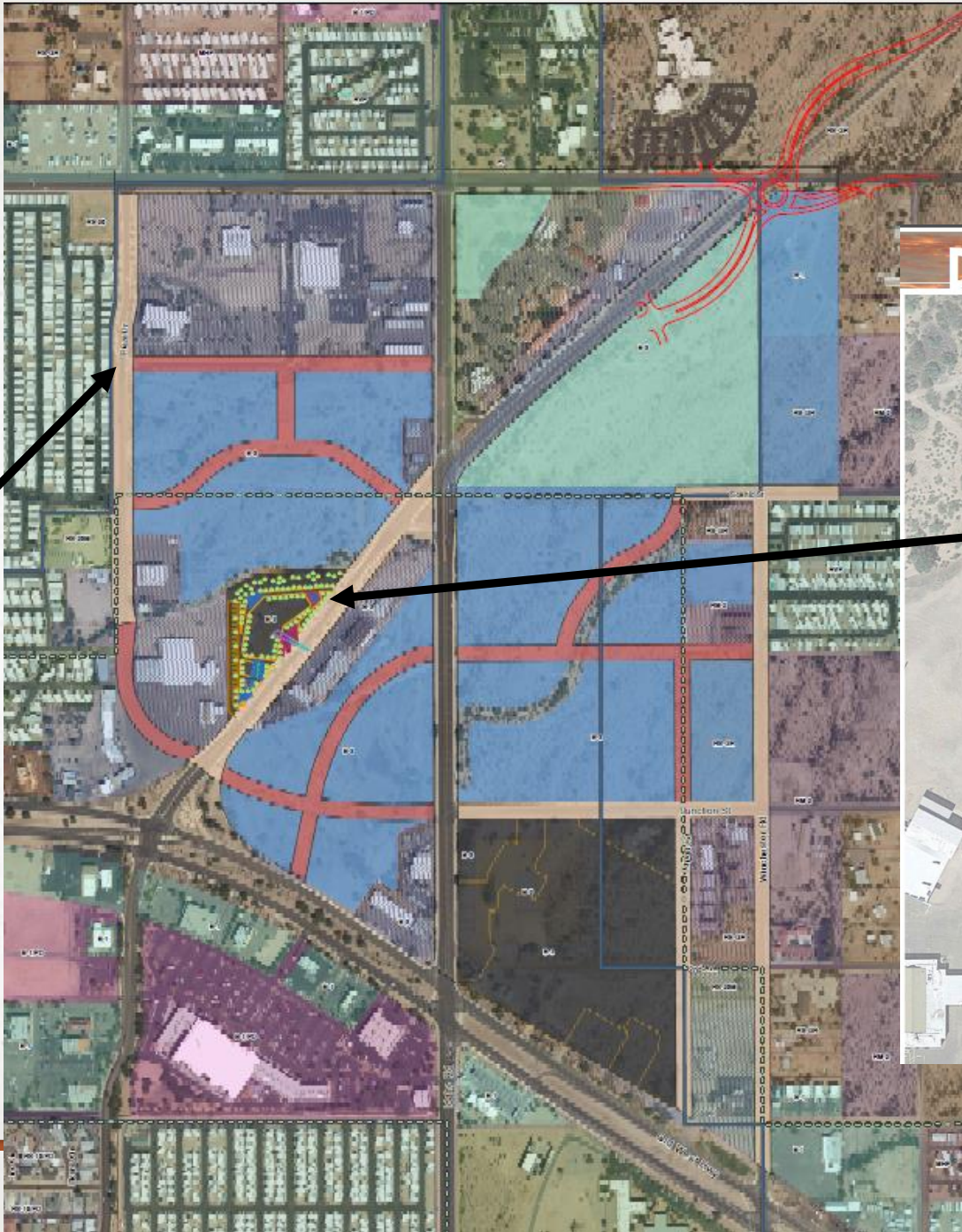
MAP 6-2: DOWNTOWN REDEVELOPMENT CORE PLAN

Downtown Core

- **Town Center**
 - Pedestrian
 - Town Center
 - Specialty Retail
 - Office/Residential
 - N. Apache Trail
"Main Street"
- **Governmental Center**
 - City Complex
 - Pinal County
 - Federal
- **Educational Center**
 - Central Arizona College



CITY INFLUENCE

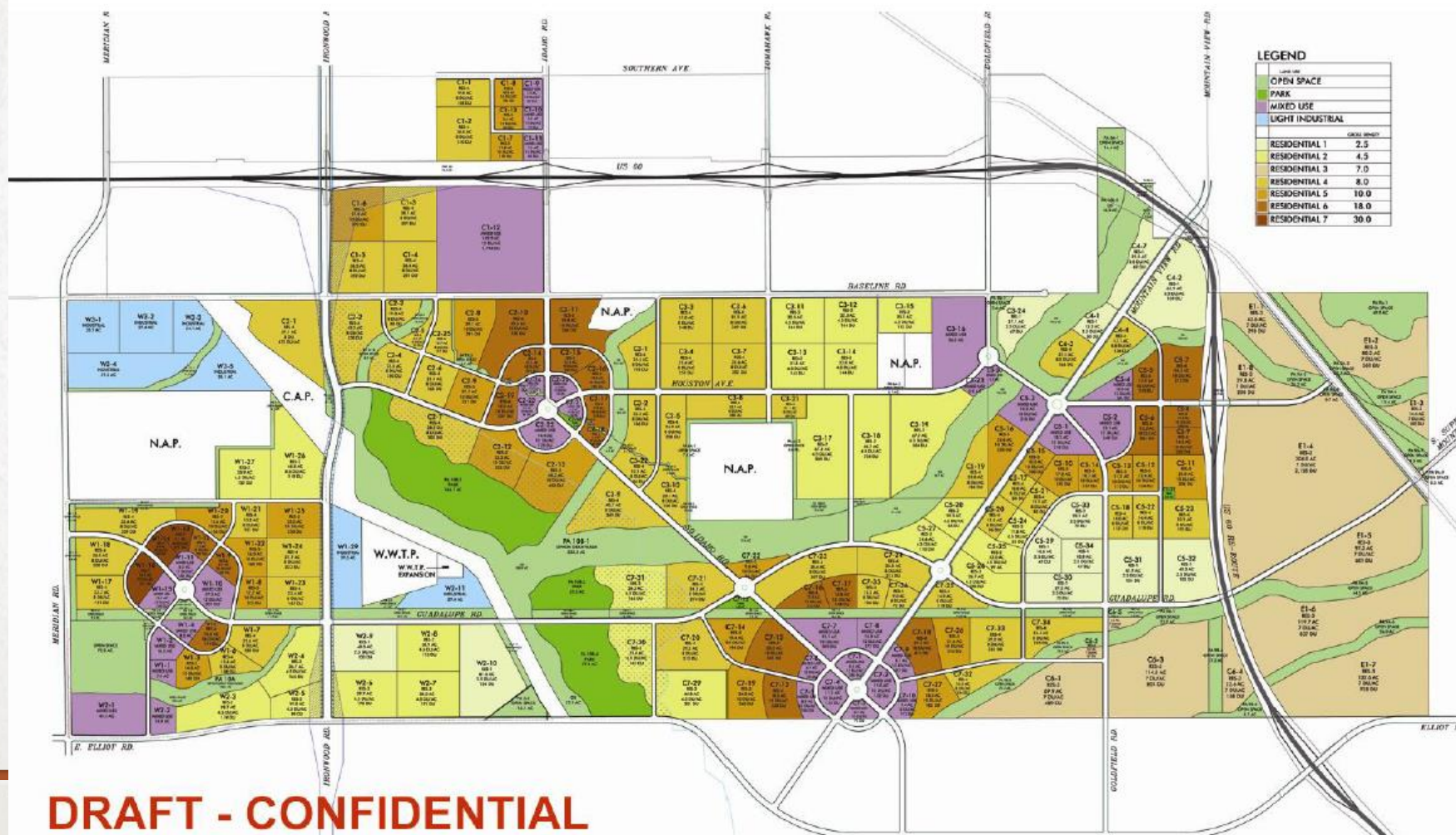


**STATE LAND-
SOUTH OF US 60**



PORTALIS STATE LAND CONCEPT-“LOST DUTCHMAN HEIGHTS”

Land Use Plan



PORTALIS OPEN SPACE CONCEPT



VISION

STRENGTHS

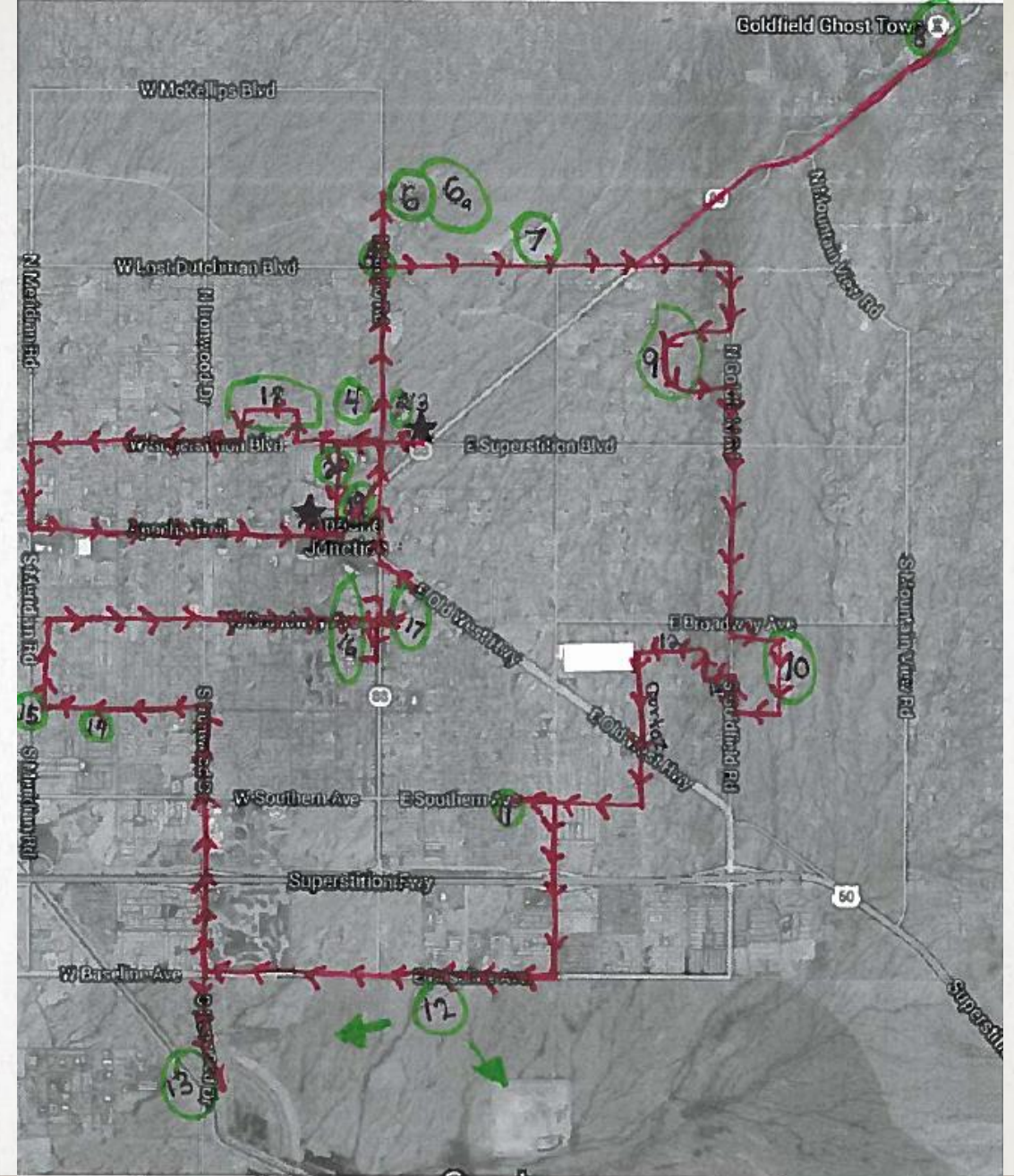
- Blank Canvas
- State Land
- Natural Resources/Abundant Open Space
 - Natural washes
 - Federal Lands (BLM and Tonto Natural Forest/Superstition Wilderness)
 - Canyon Lake
- Support for trails and outdoor activities

WEAKNESSES

- Lack of overall vision
- State Land
- Downtown
- Poor Connectivity
- Lack of infrastructure



↑ N



TENTATIVE DATES

- 2/15 Meet at ASU- Class will present progress
- 2/16 City Council Presentation- ASU will introduce project
- 2/29 Community Workshop 6pm-7:30pm @ City Conference Center
- 3/2 Possible ASU Presentation to Parks and Recreation Board
- 3/21 Meet at ASU- Class will present progress
- 3/28 Community Workshop II
- 4/6 Possible ASU Presentation to Parks and Recreation Board
- 4/11 Meet at ASU- Class will present progress
- 4/19 City Council Presentation- ASU will give final presentation (Alternative date 5/3)

RESOURCES - CONTACT INFORMATION

Rudy Esquivias

resquivias@ajcity.net

480-474-2645

Giao Pham

gpham@ajcity.net

480-474-8513

Larry Kirch

lkirch@ajcity.net

480-474-5082

Stephanie Bubenheim

sbubenheim@ajcity.net

480-474-5087



CITY ADDRESS

300 E Superstition Blvd
Apache Junction, AZ 85119

