

PZ-4-16

Proposed Planned Development Major  
Amendment  
351 N. Ironwood Drive



**City of Apache Junction  
City Council Meeting  
May 3, 2016**

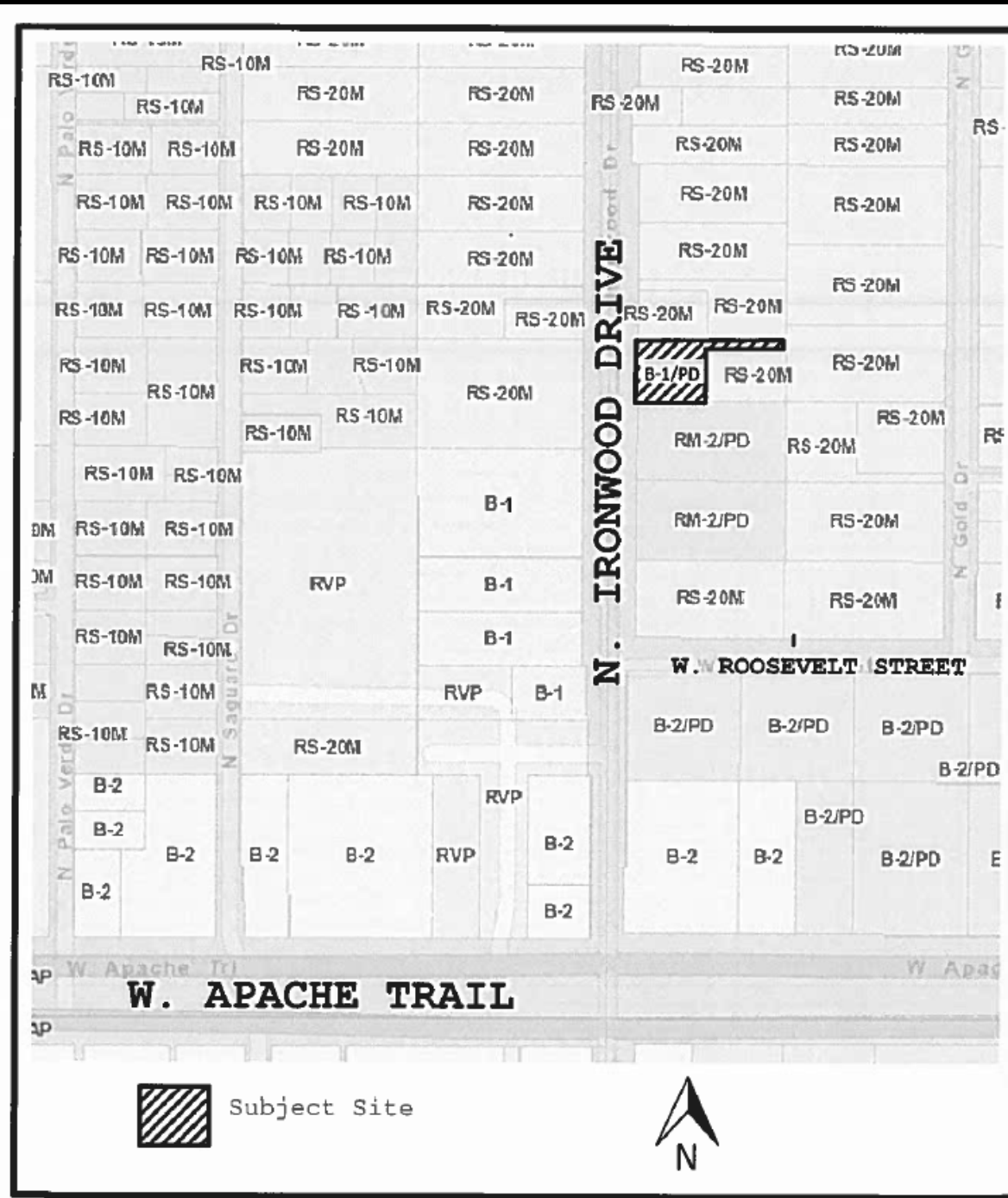


# PZ-4-16 Aerial Map

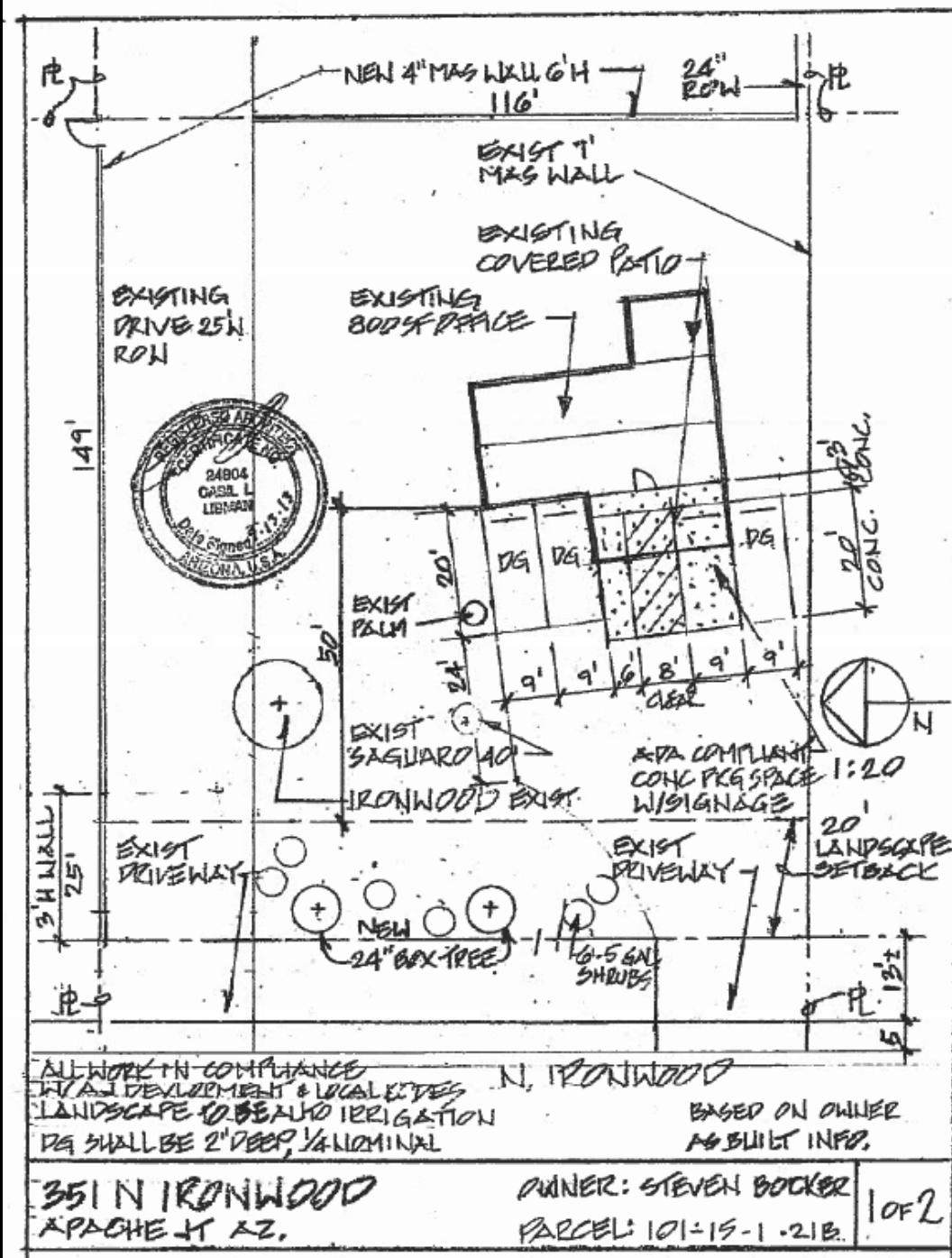
Zoning:  
B-1/PD



# PZ-4-16 Vicinity Map



# PZ-4-16 Site Plan



# Conditions

1. The pallet of uses permitted on the property will be based off the Non-Residential Use Regulations table from Apache Junction City Code Volume 2; Section 1-5-3, and as further refined in scope in accordance with the list contained in case file PZ-4-16, agreed to by the applicants and staff.
2. Any future expansions or increases in intensity as determined by Development Services Staff may require additional property or building improvements.
3. Except as otherwise conditioned herein, all other applicable provisions of Ordinance No. 961 are still in full force and effect.