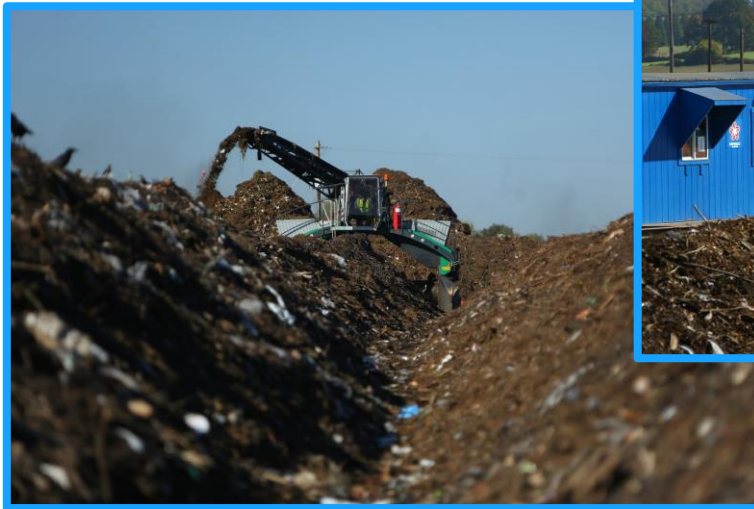


Municipal Composting



What is Composting?

1. **Complex ecosystem of microbes...**

- It is a biological process



2. **...that break down organic feedstock...**

- Green waste – yards, parks, grounds
- Food waste
 - Fruits, vegetables, etc
 - Meats, cheeses (with exceptions)

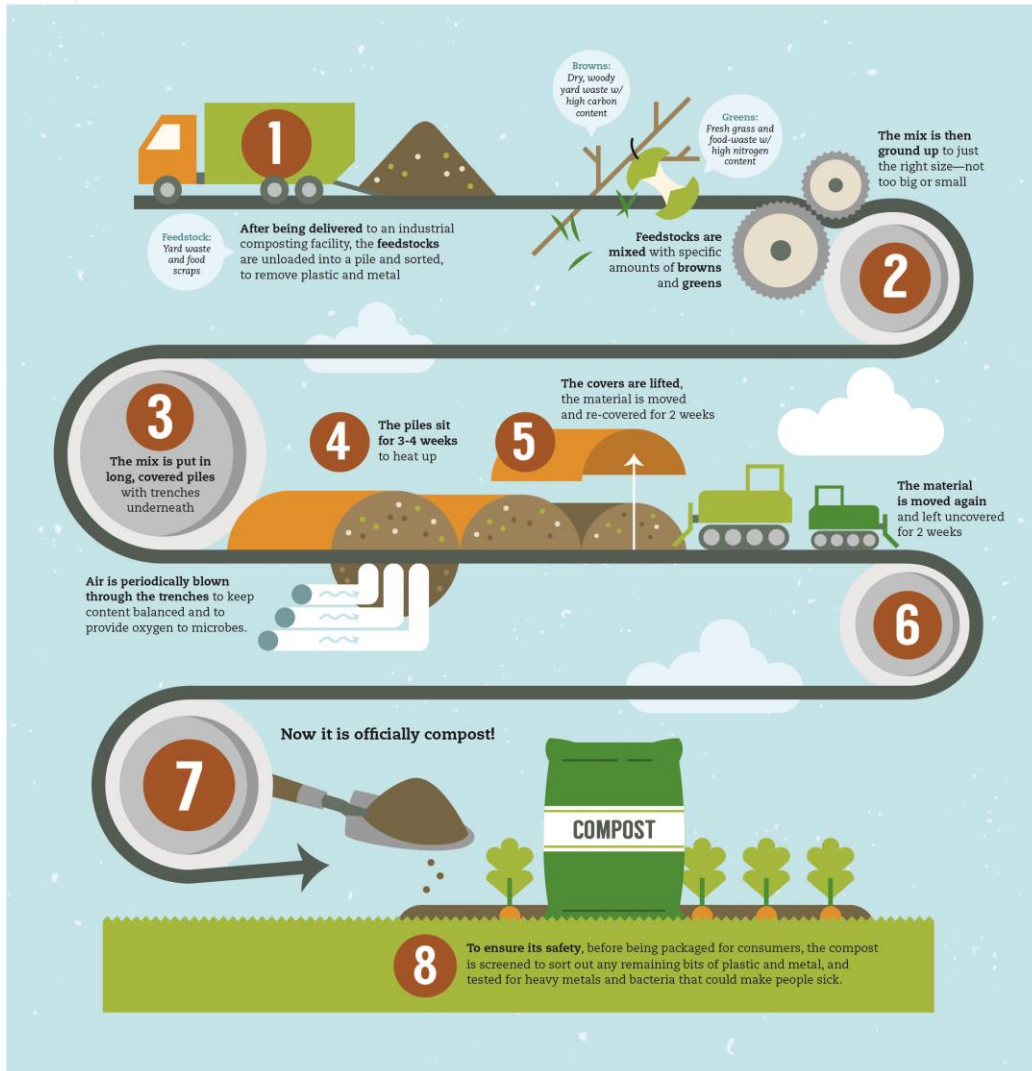


3. **...in a compost “manufacturing” facility.**

- Investment and equipment varies depending on inputs/outputs



How does it work?



- Multi-step process that requires daily care, management
 - Nutrient balance
 - Particle size
 - Moisture content
 - Oxygen flow
 - Temperature
- Same conditions as any solid waste management facility
 - Permits
 - Operations
 - Compliance



Benefits

- Improves soil conditions
 - Structure, porosity, density (better root environment)
 - Water holding capacity
 - Supplies macro and micronutrients
- Erosion control
- Reduces organic matter in landfills
- Sustainability – recycling of organics
- Service desired by environmentally focused residents



→ *Great option for compliance with landfill organics bans*



Feedstock Considerations

Generators



Residential



Commercial



Industrial

Organic Material

- Leaves, grass clippings
- Yard trimmings
- Flowers and weeds
- Small branches
- Unpainted wood
- Fruits, vegetables
- Coffee grounds
- Meats, dairy, seafood
- Soiled paper
- Shredded paper
- Animal waste, diapers
- Bones, eggshells
- Compostable dishwear
- Food packaging
- Bagged food waste
- Grease, liquids
- Animal byproducts

Collection Method



Technology Considerations

- **Capital: \$500k – \$20M+, Tip fee = \$60+/ton**
- *Type, amount, mix of organics determine facility needed*
 - Traditional (typically 90% green waste, 10% food)
 - Passive/Open Pile
 - Aerated/Turned Windrows
 - Aerated Static Pile (ASP)
 - In-vessel composting
 - Emerging (higher amount of food waste)
 - Covered, Aerated Static Pile (CASP)



Challenges

- Feedstock Contamination
- Odors
- Vectors/Pests
- Leachate/Runoff
- Herbicides, Heavy metals, Pathogens
- Compost End Markets
- Compost Quality



→ *Requires significant financial and operational commitment*

