

RESOLUTION NO. 18-14

A RESOLUTION OF THE MAYOR AND CITY COUNCIL OF THE CITY OF APACHE JUNCTION, ARIZONA, DESIGNATING AN AREA AS THE SINGLE CENTRAL BUSINESS DISTRICT OF THE CITY OF APACHE JUNCTION, ARIZONA; AND RESCINDING RESOLUTION NO. 00-10.

WHEREAS, on May 16, 2000, the mayor and city council passed and adopted Resolution 00-10 establishing the City of Apache Junction ("City")'s first and only Single Central Business District ("SCBD") with boundaries roughly along Apache Trail from Winchester Road to Meridian Drive inclusive of the downtown core; and

WHEREAS, the designation of a SCBD offers a valuable community redevelopment tool in the City; and

WHEREAS, this designation gives the City the ability to leverage low land costs and improvements to maximize future value and potential to the City; and

WHEREAS, this is a proven tool, understood by developers, that can assist the revitalization of developmentally challenged areas; and

WHEREAS, pursuant to Arizona Revised Statutes ("A.R.S.") § 42-6209, the City may abate any levied excise tax when a certificate of occupancy is issued and for up to eight years therefrom for all properties located in the SCBD which is owned by the City and leased for any commercial, residential, rental or industrial purpose, including but not limited to office, retail, restaurant, service business, hotel, entertainment, or recreational usage (known as a government property lease excise tax ("GPLET")); and

WHEREAS, in order to more effectively use this scarce economic development tool which continuously is amended by state legislators, staff recommends a realignment of the SCBD in order to promote investment and development within the City in such boundaries where there is now a larger volume of lacking and deteriorating infrastructure due to aging residential and commercial properties.

NOW, THEREFORE, BE IT RESOLVED BY THE MAYOR AND CITY COUNCIL OF THE CITY OF APACHE JUNCTION, ARIZONA AS FOLLOWS:

1) The area depicted in Exhibit A is hereby designated as the only Single Central Business District within the City of Apache Junction pursuant to A.R.S. § 42-6209, as amended.

2) Resolution No. 00-10, which established the original Single Central Business District, is hereby rescinded.

PASSED AND ADOPTED BY THE MAYOR AND CITY COUNCIL OF THE CITY OF APACHE JUNCTION, ARIZONA, THIS \_\_\_\_\_ DAY OF \_\_\_\_\_, 2018.

SIGNED AND ATTESTED TO THIS \_\_\_\_\_ DAY OF \_\_\_\_\_, 2018.

\_\_\_\_\_  
JEFF SERDY  
Mayor

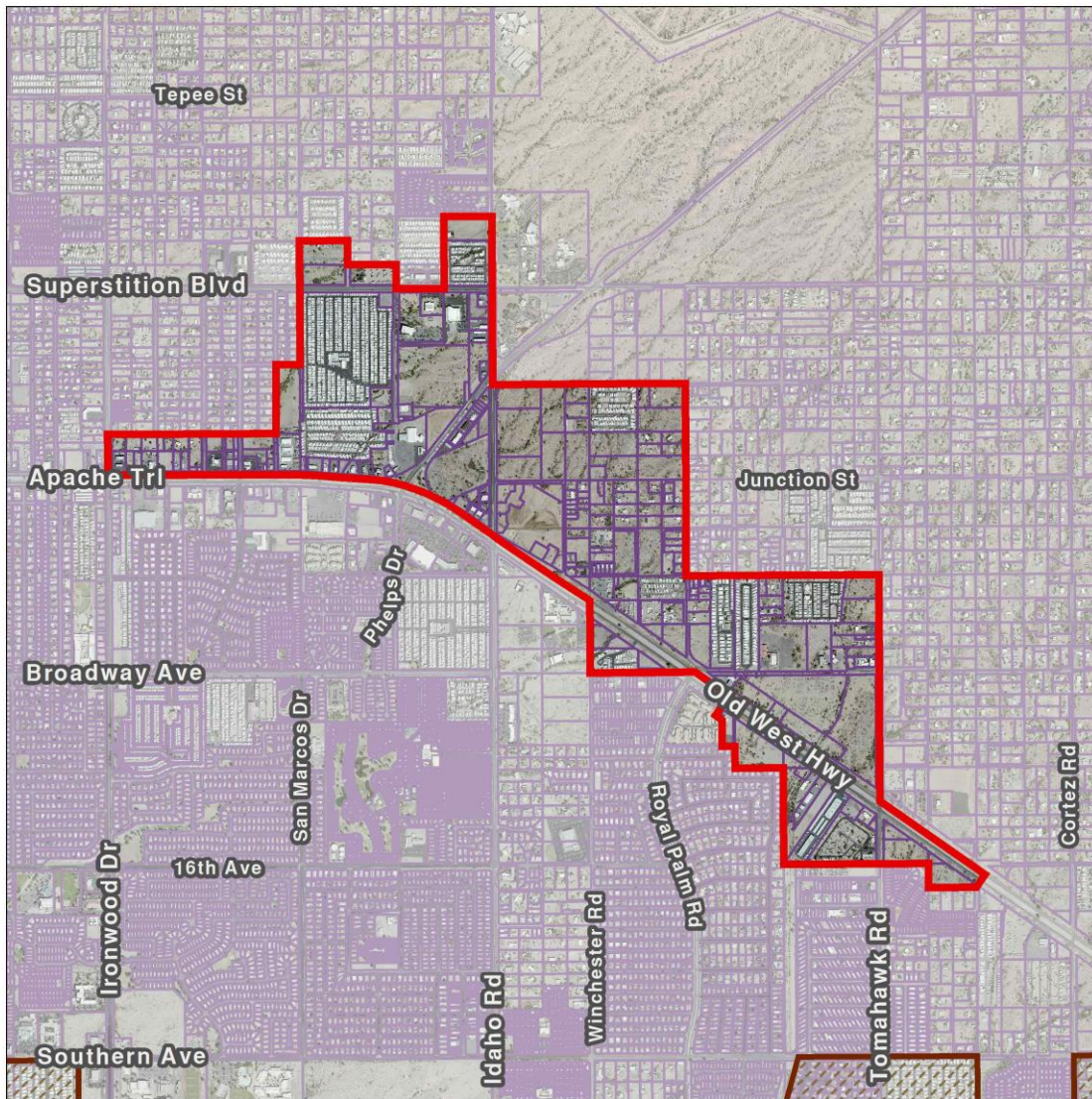
ATTEST:

\_\_\_\_\_  
KATHLEEN CONNELLY  
City Clerk

APPROVED AS TO FORM:

\_\_\_\_\_  
RICHARD J. STERN  
City Attorney

# EXHIBIT A



## City of Apache Junction Single Central Business District

### LEGEND

- Subject Site
- Parcel

DISCLAIMER: This exhibit was produced without benefit of a field survey and is not intended to represent a survey document of any kind. Distances shown hereon are approximate. Parcel lines shown hereon are approximate and may not reflect the exact position or alignment of parcel lines, roadway center lines, or easement lines.

