

**APACHE JUNCTION MUNICIPAL COURT
300 E. SUPERSTITION BLVD.
APACHE JUNCTION, ARIZONA 85119
480-982-8250**

TO: Mayor and City Council

FROM: James W. Hazel, Presiding Magistrate

RE: Proposed Ordinance on Home Detention

DATE: November 5, 2018

The purpose of this memorandum is to provide background to the Mayor and City Council for a proposed ordinance to authorize the Apache Junction Municipal Court to implement a home detention and electronic monitoring program.

Home Detention occurs when a defendant, instead of serving their sentence in jail, is sentenced to electronic home monitoring by the court. Arizona law allows home confinement for a defendant who has committed a misdemeanor offense, and the court determines that home confinement is in the best interest of society. Electronic home monitoring requires a defendant to wear an ankle device under clothing that transmits a signal detailing its location. This is usually in the form of an ankle bracelet, which is placed on a person's leg by the court. The ankle bracelet can be easily worn under long pants. Home Detention is voluntary for the Defendant and provides an alternative to being held in the County Jail.

The City of Apache Junction budgets each year more than \$290,000.00 for jail costs relating to incarceration of misdemeanants it prosecutes. In Fiscal year 2017-2018, the City of Apache Junction paid \$343,288.88 in jail fees to Pinal County.

The advantages of home detention to the Courts is reduced jail costs. The defendant benefits by being allowed to travel to and from work and other necessary appointments.

The cost of home detention is assessed to the Defendant in addition to any fines and fees imposed.

One criticism directed at home detention programs is that only persons with the financial resources are able to pay for the program and can participate. Any home detention program adopted within the City of Apache Junction will have to provide a means for all persons who qualify to participate regardless of income.

The Apache Junction Municipal Court believes it can implement a home detention program at an average cost of \$17 per day.

The Chart below highlights cost difference of Pinal County Jail and home detention.

Method Used	Cost per 1 st Day	Cost per Each Day Thereafter	Cost per Week
Housed in Pinal County Jail	\$193.83	\$72.30	\$627.63
Home Detention	\$17	\$17	\$119.00

Difference in Cost Per Week	\$508.63
-----------------------------	----------

If the program was implemented, the exact cost savings would be difficult to estimate. However, for every defendant placed in home detention, the city would save over \$508 a week in costs. Home detention offers an option for cost savings.

The success of the program will depend on participants involved including the Police, City Prosecutor, the Court and the participants.

The Court would provide regular reports to City Council and Management as to the cost savings.

HOW GPS TRACKING WORKS

GPS SATELLITES

At least four satellite signals are used at all times to enhance the accuracy of a participant's position.

THE PARTICIPANT

Ankle-worn GPS transceiver collects location data and transmits it to our 24/7/365 National Monitoring Center.

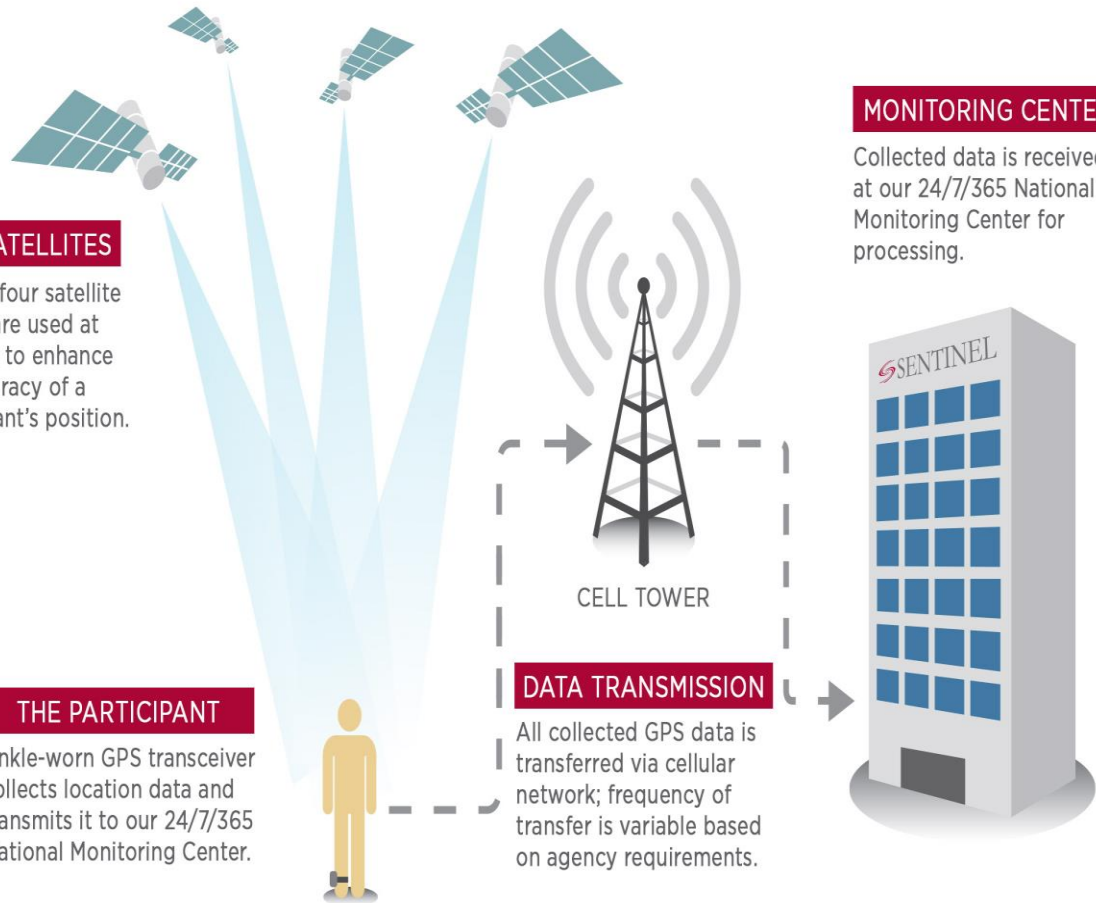
CELL TOWER

DATA TRANSMISSION

All collected GPS data is transferred via cellular network; frequency of transfer is variable based on agency requirements.

MONITORING CENTER

Collected data is received at our 24/7/365 National Monitoring Center for processing.



Electronic Monitoring Works as follows:

The participant is equipped with a GPS tracking device.

The tracking device is water resistant which allows the participant to shower while wearing the device.

The device captures latitude and longitude coordinates from a minimum of four satellites. Location data along with the date, timestamp and rate of travel (speed) are processed.

Data is collected by the GPS device and transmitted to a vendor monitoring center via cellular towers.

The participant is responsible for the cost of the device if lost or destroyed. The average cost of replace is roughly \$1500.

The participant location is tracked, and the status of the monitoring device is reported back to the Court.

The Vendor provides real time updates to Court staff if participants are in violation of court ordered release conditions.

The tracking devices are reusable. After use by a participant the device is cleaned, recharged and then is ready for next participant.

|

Electronic Monitoring Equipment Security Features

The GPS device is equipped with multiple tamper detection features. First, the hypoallergenic ankle strap is designed with dual fiber-optic tamper detection. Any cut or damage to the strap will generate a “tamper” alert to be transmitted by the GPS device to the national monitoring center for processing. This alert will then be sent to the designated court personnel via text or email.

Second, the device uses a heavy-duty plastic back plate to secure the ankle strap and GPS device when assembled. If the offender attempts to dislodge the strap and back plate from the GPS device, the device will register the separation of the back plate from the device and generate a tamper alert. This alert will be sent to the national monitoring center for processing and transmission to the designated court personnel via text or email.

Third, if the GPS device is damaged, it will generate a tamper alert which is sent to the national monitoring center for processing. This alert will be transmitted to designated court personnel via text or email.

In addition, the monitoring system will provide an alert if the device fails to check in as required which is another confirmation of proper service status.



Sample Tracking Device



Sample Alcohol Monitoring Device