



# Parks & Recreation Commission Report

## OFF LEASH DOG PARKS

November 7, 2018

Liz Langenbach, Parks & Rec Director



# History

**The City aggressively pursued dog park concepts in 2007/2008:**

- Prospector Park
- Silly Mountain Park

**Downturn in Economy put plans on hold**

**County Complex identified as an alternative, less costly site**

# ASU Project Cities Study (2017)

## Top Recommendations

1. LOCATION: Due to financial constraints, consider constructing a smaller scale park with basic amenities, closer to residential areas
2. AMENITIES: Park should be minimum 1 acre with turf with min. 5 ft. fencing, and separate areas for large/small dogs. Shade, seating, water features were the next top amenities
3. FUNDING: The most common funding source for local dog parks is through municipal bonds and capital improvement projects

# ASU Project Cities

## Recommended Next Steps:

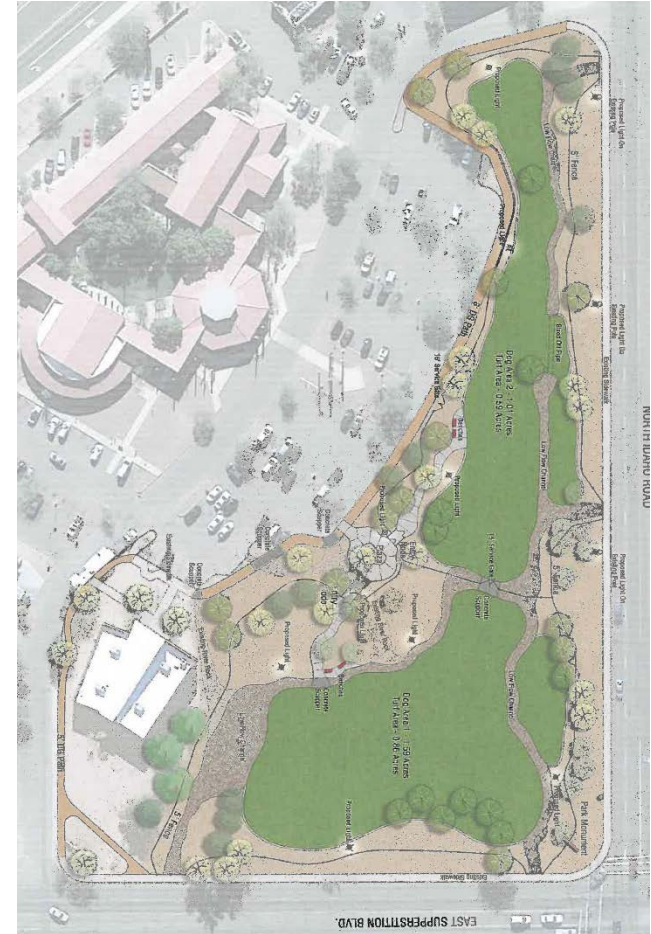
1. Further discussion with City Council and other potential partners on funding and available sites
2. Further discussion with the community on the needs of an off-leash dog park – amenities, location, etc.

# Strategic Approach - Goals

1. Maximize Community Input— P&R Commission meetings? Task Force? Surveys?
2. Efficient & Quick Process
3. Identify pros and cons of various locations/amenities
4. Identify long term and short term solutions

# Potential Locations

1. Prospector Park
2. Silly Mountain Park
3. County Complex
4. Superstition Shadows Park
5. Other?



# Costs

1. Design Costs (10% of est. construction)
2. Construction Costs
  - Our plans/Other cities: \$40k-\$5Mill
3. Maintenance/Operation Costs
  - An area size of Flatiron is roughly \$70k (utilities, manpower, repairs/replacement, etc)

# Funding Sources

1. Grants – average grant is \$5k-\$30k
2. Development Fees – depending on location, could be a source
3. Corporate Partnerships – very successful for Flatiron, lots of work
4. General Fund (tax dollars) – lots of competition for other projects
5. Other sources – bonds and other capital facility campaigns



# East Valley Dog Parks To Visit



Countryside Dog Park (Mesa)

Quail Run Park\* (Mesa)

Cosmo Dog Park (Gilbert)

Crossroads Park\* (Gilbert)

Pocket Park for Pups (Queen Creek)

Shawnee Bark Park (Chandler)

Paseo Vista Recreation Area\* (Chandler)

Little League Park\* (Florence)

# Short Term Solutions

- Pop Up Pup Parks
- Fenced storm water detention basins
- Other areas?

