



# State Route 24 (Gateway Freeway)

## Interim Phase II

### Ellsworth Road to Ironwood Drive

#### OVERVIEW

The Arizona Department of Transportation (ADOT), in conjunction with the Federal Highway Administration (FHWA), is designing the Interim Phase II section of State Route 24 (SR 24) also referred to as Gateway Freeway. This section will include approximately 5 miles of new roadway extending from Ellsworth Road in Maricopa County to Ironwood Drive in Pinal County. The project is currently in the final design phase and construction is anticipated to begin in fall 2020.

The Interim Phase II segment of SR 24 follows the completion of Phase I in 2014, which opened the segment of roadway between State Route 202 (Loop 202/Santan Freeway) and Ellsworth Road.

Since the ultimate build-out of SR 24 is not anticipated until Phase V of the Maricopa Association of Governments' Regional Transportation Plan, ADOT and FHWA have planned for an interim roadway that will help serve the transportation needs of the region until additional funding is made available.

Updated information will be added to the project web page, [azdot.gov/SR24](http://azdot.gov/SR24), as it becomes available. To receive project updates by email, visit the web page and click on Subscribe for Updates.

#### SCHEDULE

- Winter 2018: Contract awarded to design consultant
- 2019 - 2020: Interim Phase II Final Design
- Fall 2020: Construction begins
- 2022: Anticipated construction completion (20-24 months duration)

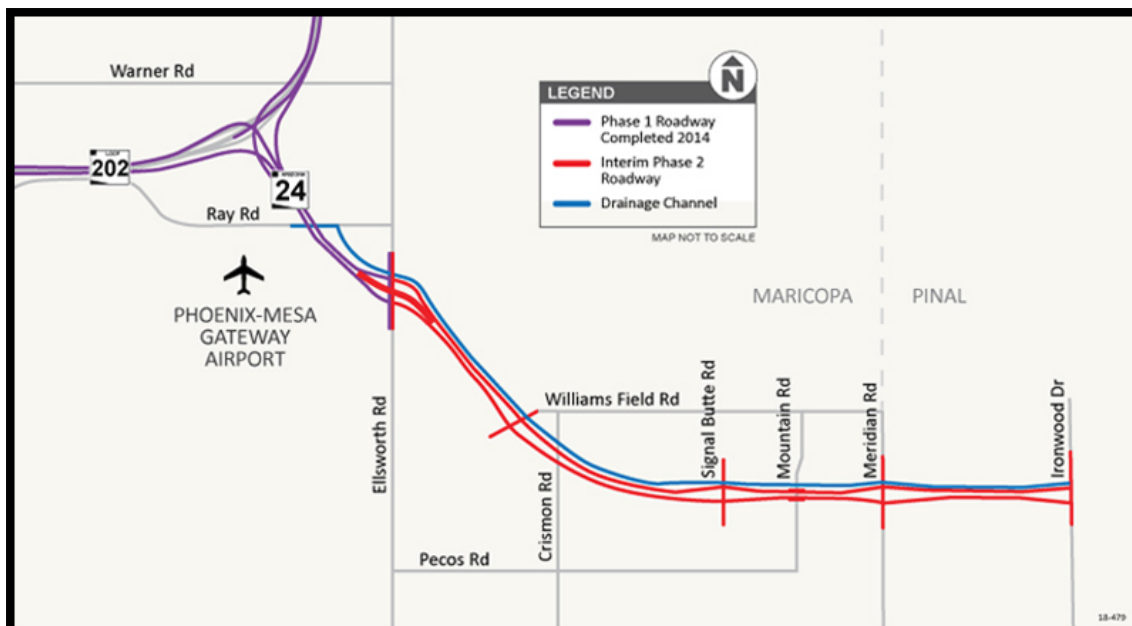
*Schedules are subject to change*

#### PROJECT FEATURES

- Two paved travel lanes in each direction separated by a median
- At-grade intersections at the following locations:
  - Williams Field Road
  - Signal Butte Road
  - Meridian Road
  - Ironwood Drive
- Bridges over Ellsworth and Mountain roads
- A drainage channel along the north side of the roadway
- Signage, traffic signals, lighting and pavement marking, as necessary

Recent project updates include:

- The addition of bridges in each direction on SR 24 over Ellsworth Road



**FOR MORE INFORMATION:**  
855.712.8530 | [projects@azdot.gov](mailto:projects@azdot.gov)  
[azdot.gov/SR24](http://azdot.gov/SR24)

ADOT TRACS No. 024 MA 001 H8915 01C | Federal Project No: NHPP-STP-024-A(200)T