



Overview of Arizona Water Company's Apache Junction System

September 2020

Agenda

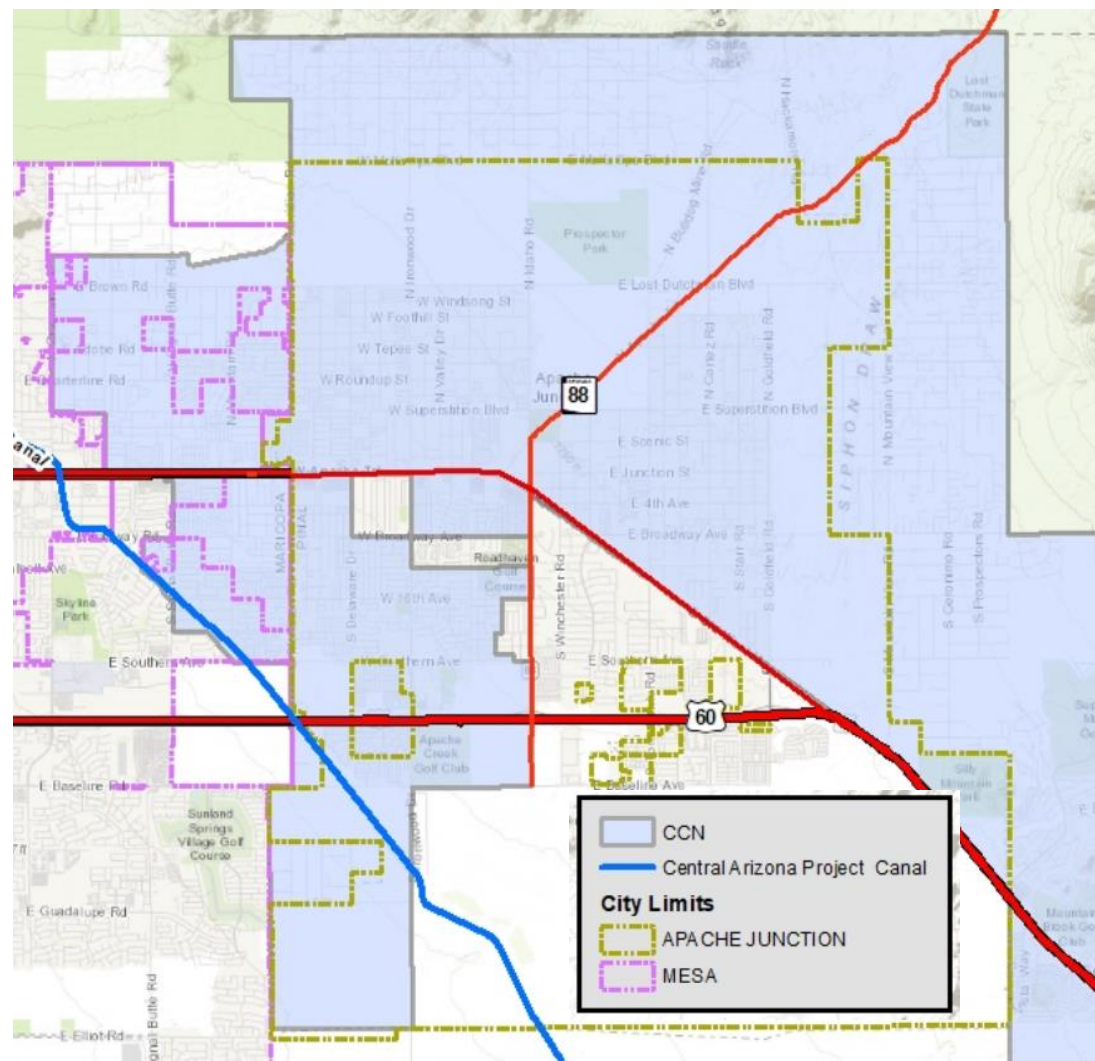
- Overview of Arizona Water Company (AWC) (Fred Schneider)
- Apache Junction Water System Overview (Bill Staples and James Wilson)
 - Treatment plant overview
 - Customer usage and growth
 - Significant projects completed in the last 5 years
 - Significant projects to be completed in the next 5 years
- CAP Water (Fred Schneider)
- Conclusion (Fred Schneider)

Arizona Water Company Overview

- Started in 1955, AWC is one of the largest private water suppliers in Arizona
- Provides water to eight counties and over 20 communities in Arizona
- 22 water systems
- Interim operator of 1 system
- Number of Service Connections – 94,000
- Population served – 265,000
- Number of Wells - 117



Apache Junction Water System Overview



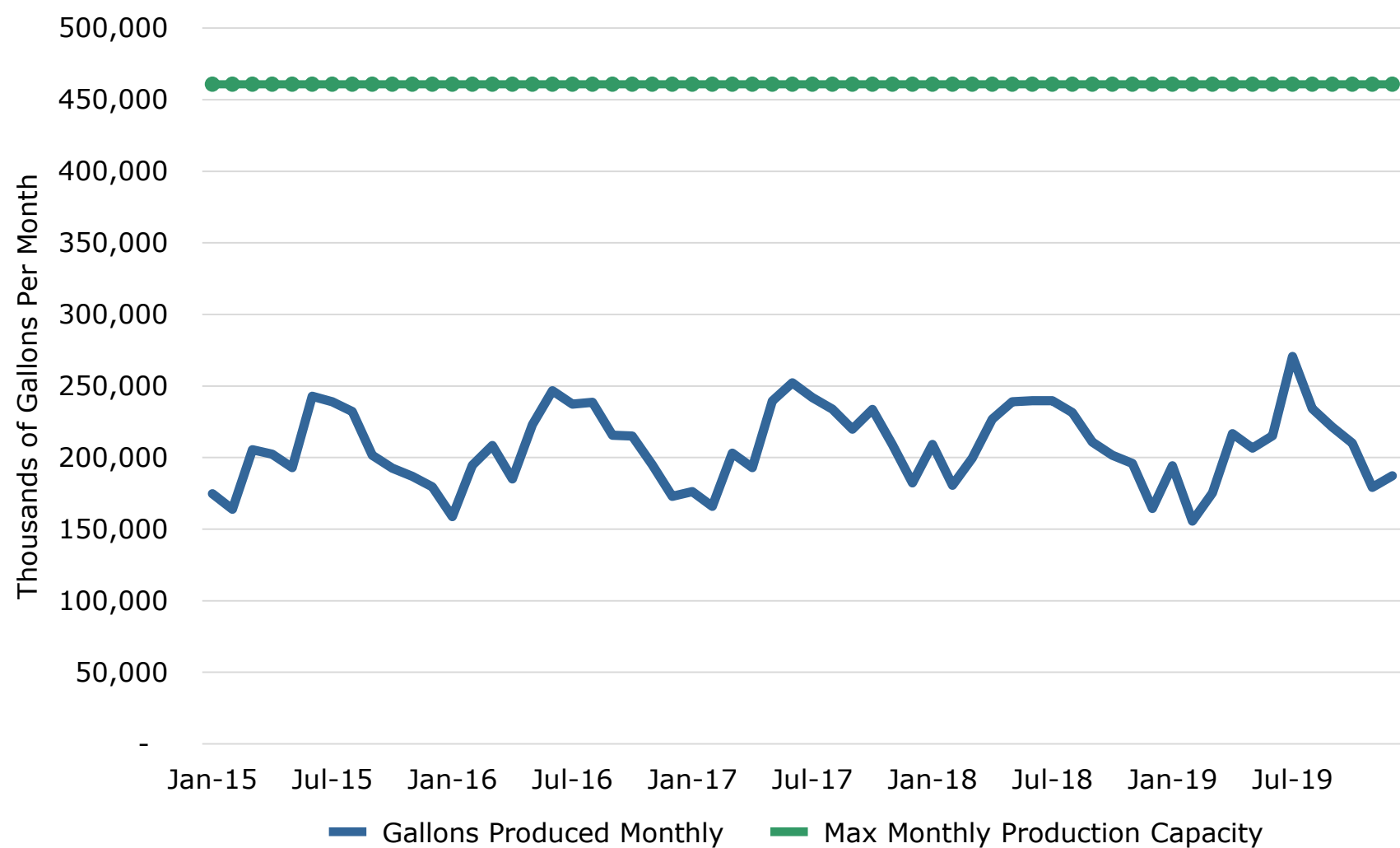
Key Facts

- 395 miles of water mains
- 7 active wells
- 11 booster pump stations
- 36 booster pumps
- 2 arsenic removal facilities
- 8,000 service connections in Apache Junction (22,000 total service connections)
- 12.1 MGD max day demand
- 4.3 MGD minimum day demand
- 6.7 MGD average daily demand
- 16.4 MGD daily production capacity
- 19 million gallon storage capacity

Overview of Apache Junction Treatment Plants (Baseline ARF)

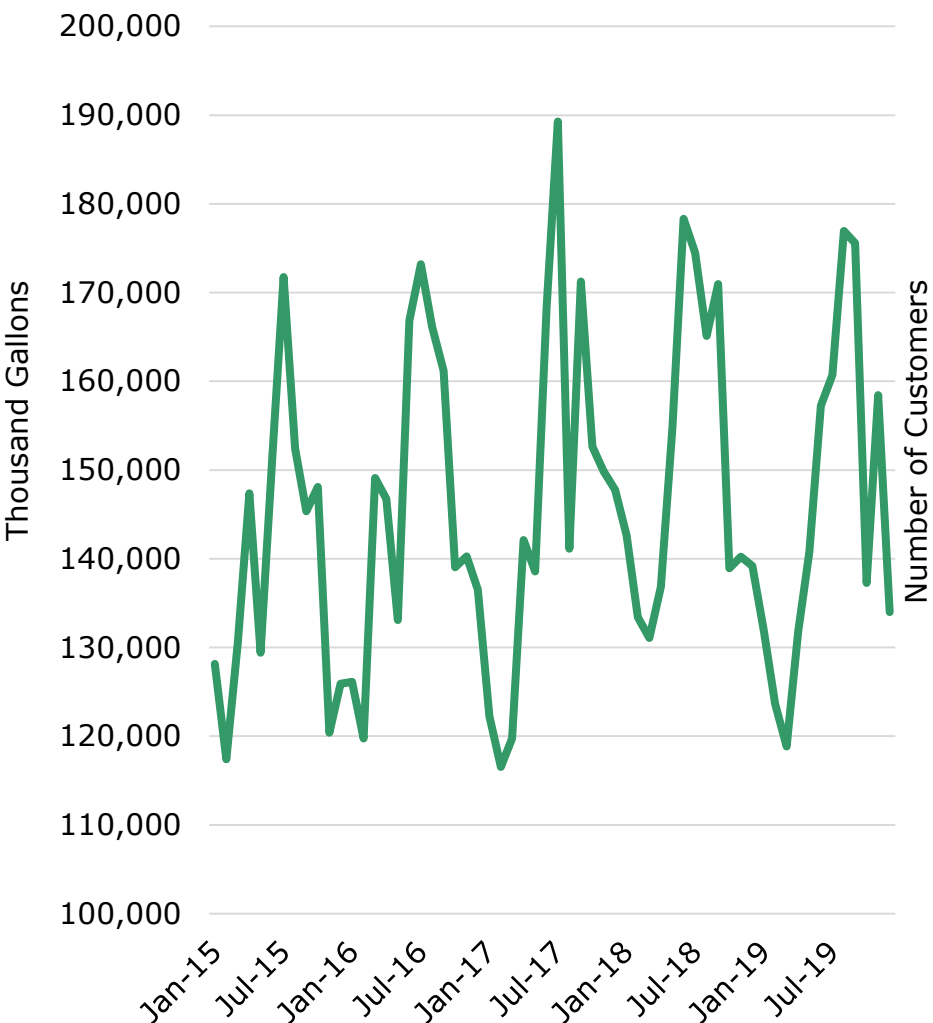


Apache Junction Monthly System Production and Capacity



Apache Junction Residential Customers and Usage

Residential Customer Usage



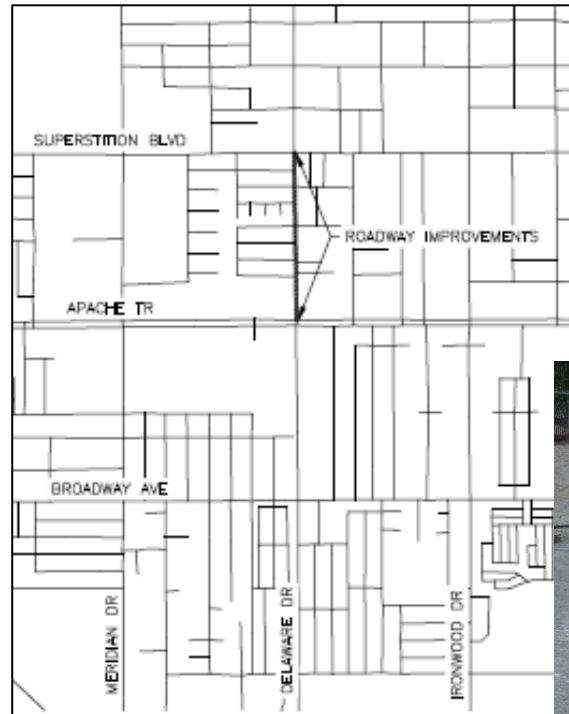
Residential Customer Growth



5 Significant Projects Completed in Apache Junction in the Last 5 Years

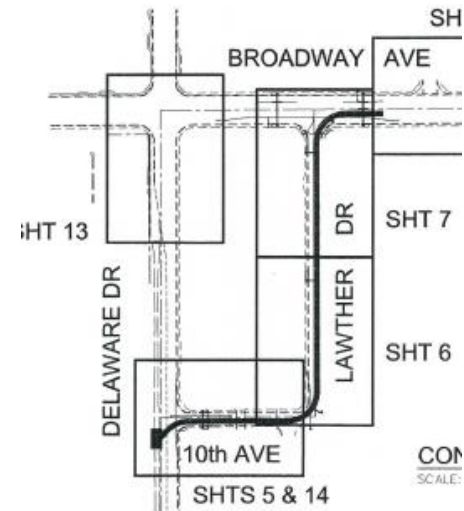
Delaware Dr. Apache Trail to Superstition Blvd

- Replaced 2,500 LF of 6-inch CA with 8-inch DIP
- In service: August 2018
- Project cost: \$600,000



Broadway, 10th Avenue, and Lawther Main Replacement

- Replaced 810 LF of 6-inch and 12-inch CA water main with 6-inch and 12-inch DIP
- In service: July 2015
- Project cost: \$440,000



Baseline ARF Expansion and Rehabilitation

- Rehabilitated and expanded the Baseline Arsenic Removal Facility (ARF) from 6.4 MGD to 8.6 MGD
- In Service: June 2016
- Project Cost: \$5,010,000



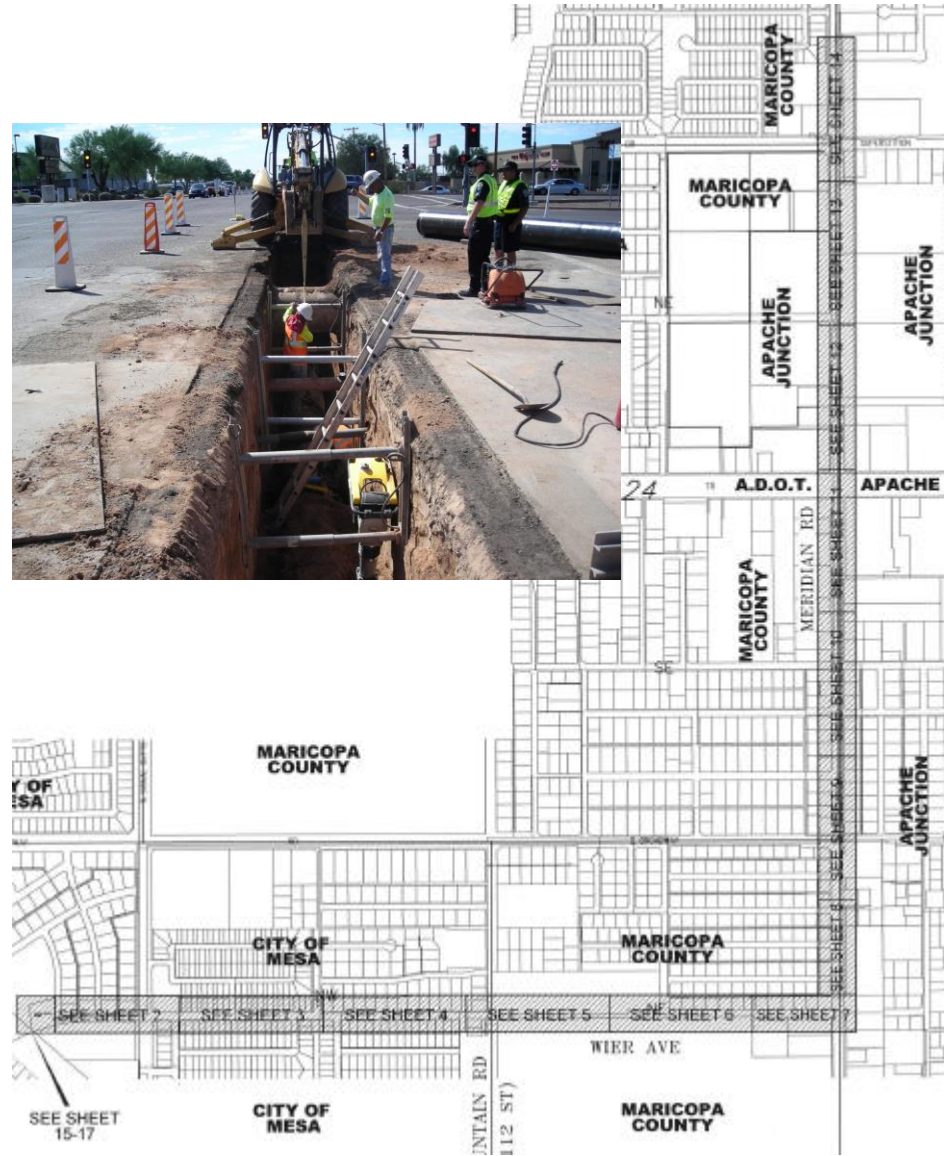
Oasis ARF Rehabilitation

- Rehabilitated the Oasis Arsenic Removal Facility (ARF)
- In Service: June 2017
- Project Cost: \$1,440,000



Oasis 24-inch Distribution Water Main

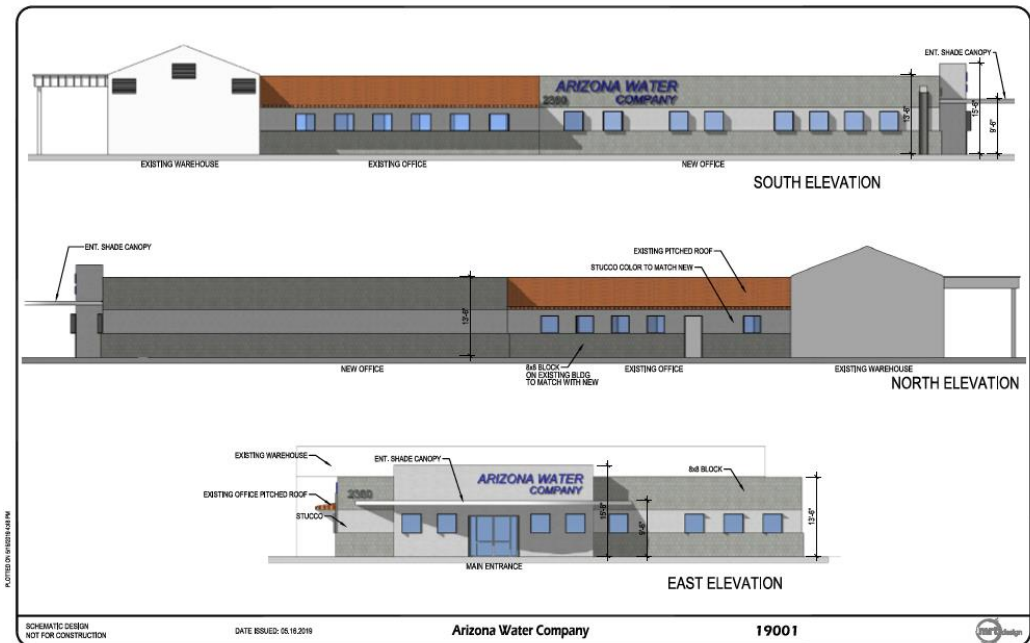
- Installation of 12,500 LF of 24-inch distribution water main on Wier Ave. and Meridian Rd.
- In Service: May 2014
- Project Cost: \$3,790,000



Significant Projects to be Completed in Apache Junction in the Next 5 Years

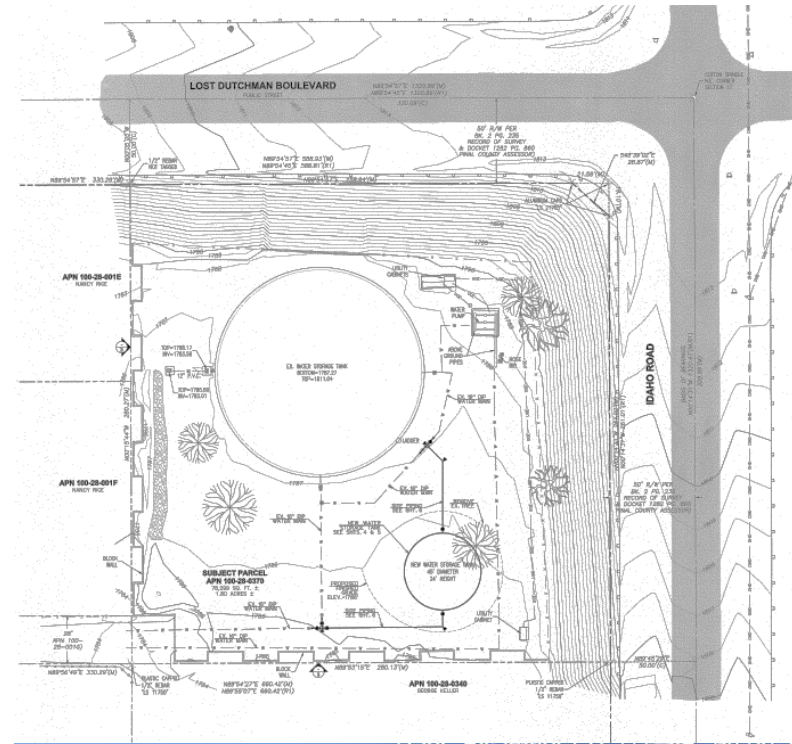
Apache Junction Operations Center Expansion

- AWC is expanding its operations center in Apache Junction
- The current office was constructed in 1993, when AWC served less than 9,000 customers and employed 13 people
- Today, AWC serves over 22,000 customers and employs 39 people in Apache Junction
- Project will expand office and customer parking. Construct a new warehouse and material storage area
- Expected in service: Summer 2021
- Estimated cost: \$3,700,000



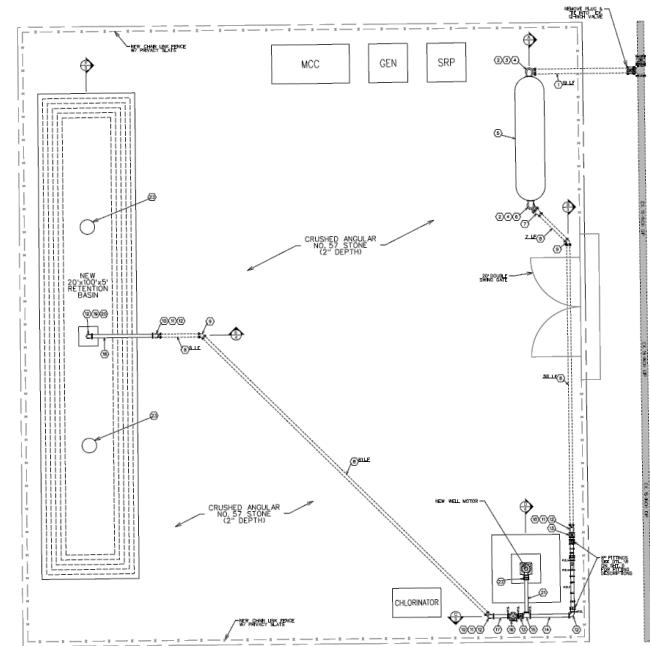
Lost Dutchman Storage Tank

- Construction of the 250,000 gallon tank allows for continuous operation of the Lost Dutchman booster pump during rehabilitation of the 2MG tank
- Expected in service: October 2020 (250,000 tank), Spring 2021 (2MG tank)
- Estimated cost: \$1,600,000



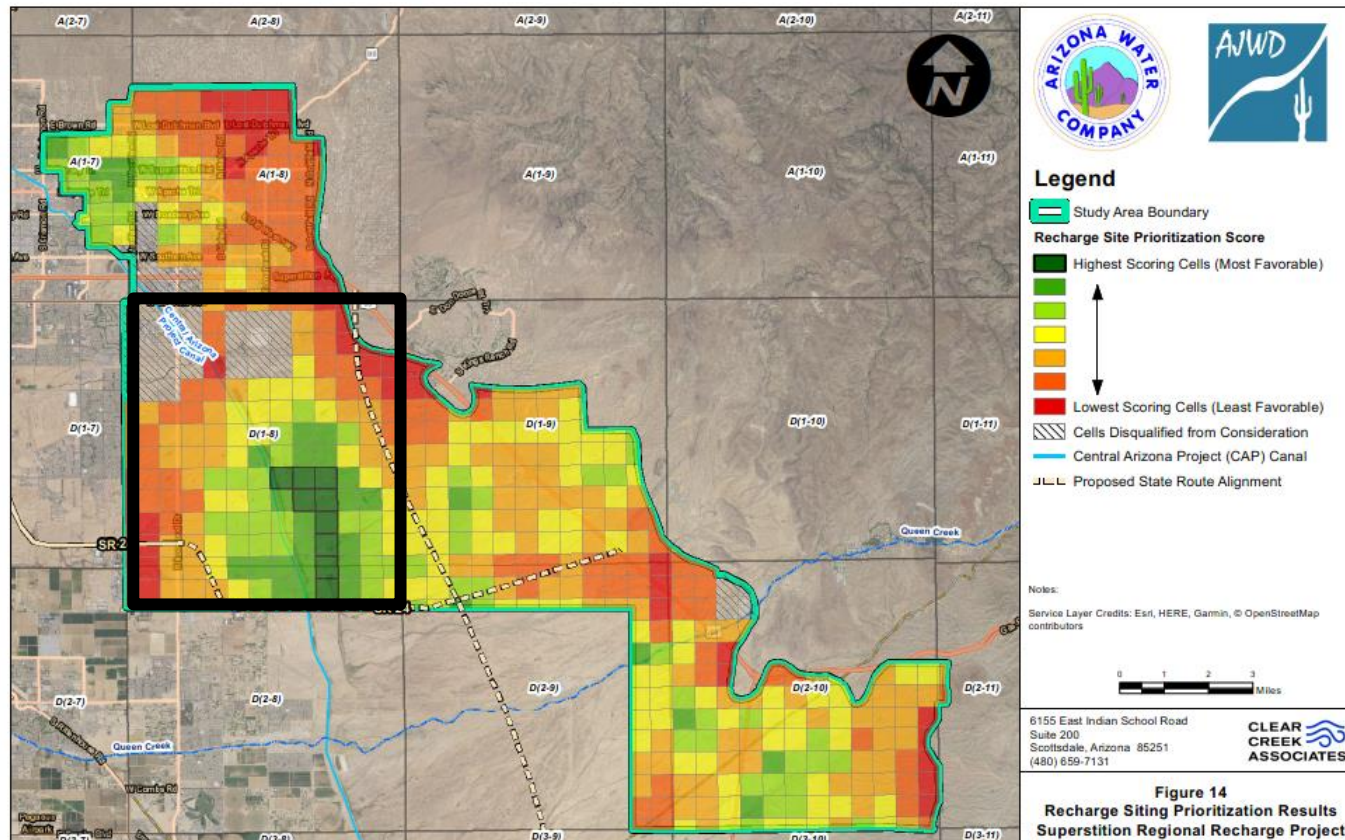
Well No. 20 at Ranch 160

- Equip Well No. 20 and install 20,356 linear feet or 3.9 miles of 16 inch ductile iron pipe
- Well pumps directly into the east side of the distribution system, where most of the growth is occurring
- Expected in service: 2021
- Estimated cost: \$4,600,000



Apache Junction CAP Water

- 6,285 acre feet annual allocation
- Currently use CAP water via annual storage and recovery
- Planning for underground storage facility (“recharge facility”) will be built within 5 years
- At full build out it will recharge AWC’s full CAP allocation
- AWC partnered with AJWD to complete preliminary recharge siting report to identify best possible locations



Questions?